

Text Equivalent

Clean Water Indian Set-Aside Emerging Contaminant Program Funding Methodology

The funding flowchart outlines the process for determining project eligibility and is intended to streamline funding.

Has an Emerging Contaminant (EC) been identified in the surface water or the wastewater system?

- **No:** An EC sampling project to further investigate is eligible.
- **Yes:** Has a planning document been completed?
 - **No:** A planning project to develop a Preliminary Engineering Report (PER) is eligible.
 - **Yes:** A CWISA EC construction project to address known contamination is eligible.

OR

Text-Equivalent of the CWISA EC Funding Methodology Graphic

Text-equivalent of the CWISA EC Funding Methodology graphic is intended for visually impaired readers and outlines the process for determining project eligibility and is intended to streamline funding.

Has an Emerging Contaminant (EC) been identified in the surface water or the wastewater system?

- **No:** An EC sampling project to further investigate is eligible.
- **Yes:** Has a planning document been completed?
 - **No:** A planning project to develop a Preliminary Engineering Report (PER) is eligible.
 - **Yes:** A CWISA EC construction project to address known contamination is eligible.

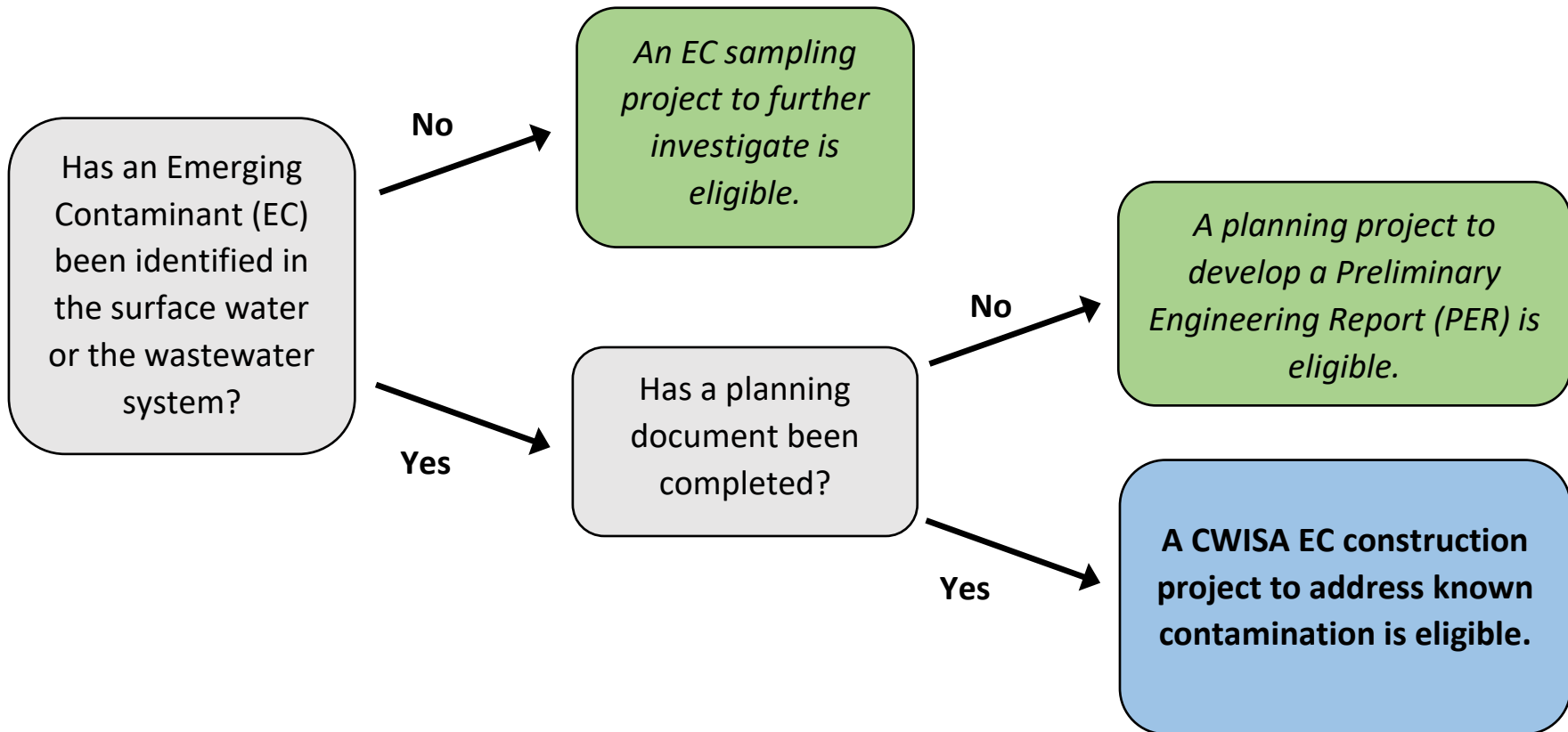


Figure 1: The funding methodology flowchart outlines the process of determining project eligibility. (Green) Boxes with italic text represent investigation and planning projects and (blue) boxes with bold text represent construction projects.