



Understanding Bulletins Live! Two

Original Webinar 2019: Steve Lennartz, BLT System Administrator

This 2023 Webinar is an update of the 2019 webinar

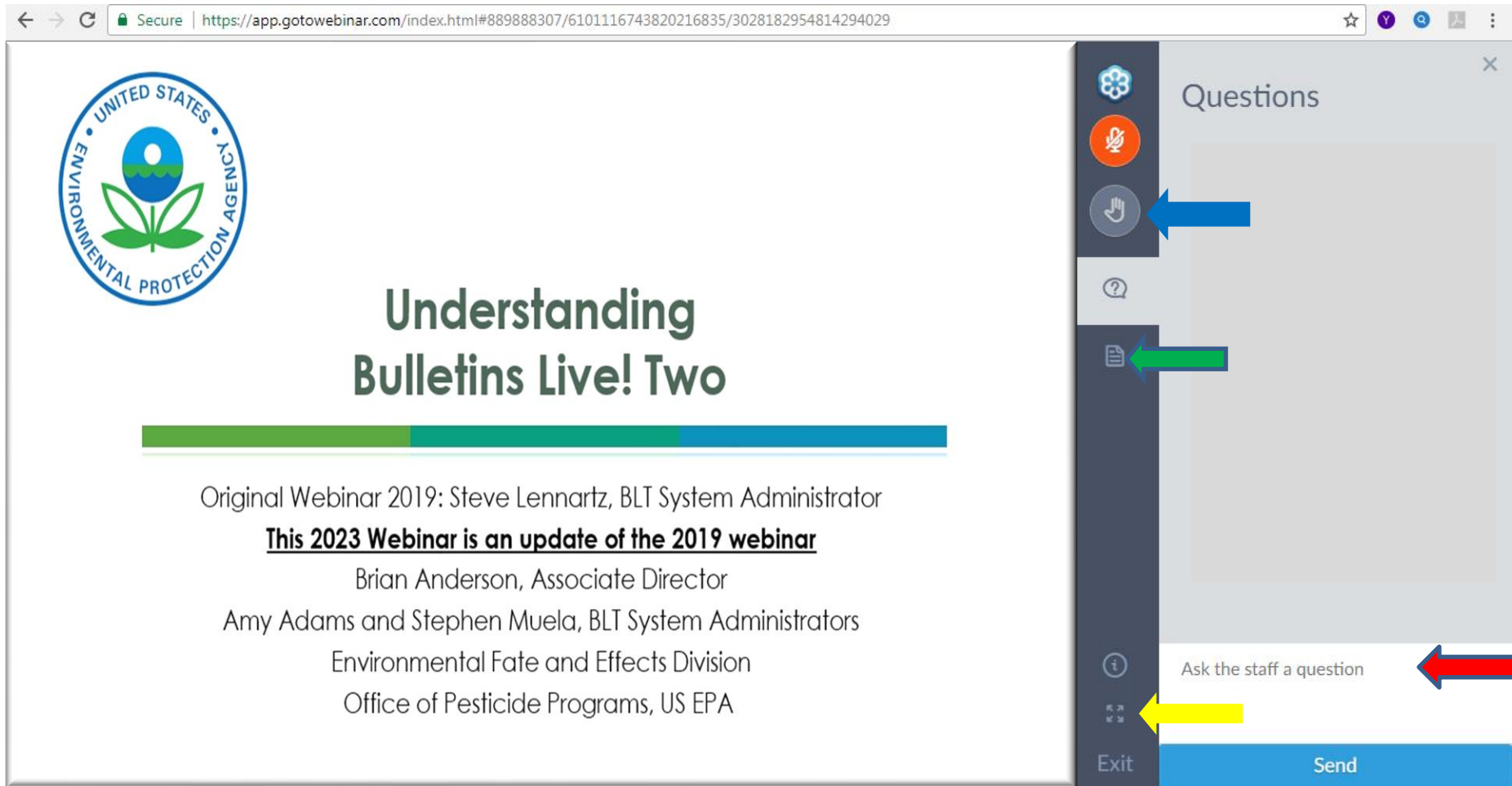
Brian Anderson, Associate Director

Amy Adams and Stephen Muela, BLT System Administrators

Environmental Fate and Effects Division


Office of Pesticide Programs, US EPA

EPA Tips for Participants



The screenshot shows a web browser window displaying a webinar slide and a sidebar with a 'Questions' panel. The slide features the EPA logo and the title 'Understanding Bulletins Live! Two'. The sidebar contains several icons: a gear, a hand, a question mark, a document, and an information icon. A red arrow points to the 'Ask the staff a question' text, and a blue arrow points to the 'Send' button. A yellow arrow points to the 'Exit' button.

Secure | <https://app.gotowebinar.com/index.html#889888307/6101116743820216835/3028182954814294029>



Understanding Bulletins Live! Two

Original Webinar 2019: Steve Lennartz, BLT System Administrator
This 2023 Webinar is an update of the 2019 webinar
Brian Anderson, Associate Director
Amy Adams and Stephen Muela, BLT System Administrators
Environmental Fate and Effects Division
Office of Pesticide Programs, US EPA


Questions

Ask the staff a question

Exit Send

2023 update focused on how Bulletins Live! Two (BLT) works

← → ↻ <https://www.epa.gov/endangered-species/bulletins-live-two-view-bulletins> 67% ☆

 An official website of the United States government [Here's how you know](#) ▾

Search EPA.gov 🔍

Environmental Topics ▾ Laws & Regulations ▾ Report a Violation ▾ About EPA ▾

Endangered Species

CONTACT US

Bulletins Live! Two -- View the Bulletins

For assistance in using Bulletins Live! Two, [view the tutorial](#). Also see [background](#), [notes](#) and a [quick start guide for BLT](#).

Directions

This tool displays Pesticide Use Limitation Areas (PULAs) for products with active Endangered Species Protection Bulletins. To generate a printable bulletin, please follow these steps:

1. Navigate to your intended pesticide application area by using the "Location Search" tool or panning and zooming on the map itself.
2. Select your Application Month from the Application Date dropdown.
3. Search for a specific pesticide product using the EPA registration number and selecting from the search results. If you need assistance finding this registration number, consult the [Pesticide Registration Search](#) tool.

[Unpin](#)

Location Search:

 🔍

Application Month:

November 2023 ▾


EPA Registration Number:

 ▾ ✕


EPA Today's Topics

- **Webinar Purpose:** to provide an overview of the Bulletins Live! Two system, what pesticide applicators need to know about complying with Bulletins, and how and when to access the system and locate applicable bulletins.
- Introduction
 - Overview of Bulletins Live! Two
 - Connection of Bulletins with pesticide labeling
- Demonstration of Bulletins Live! Two
- Frequently Asked Questions
- Contacts

Endangered Species Protection Bulletin

 **Application Month:** November 2023
Product: MALATHION 8E INSECTICIDE (34704-452) ; "CLEAN CROP MALATHION 8E INSECTICIDE"

1 Areas where pesticide use must be limited are identified on the map. A legend is located beside the map to help pinpoint these locations.



2 Look below at the Pesticide Use Limitation Summary Table. This table lists the user selected Active Ingredient(s) (AIs) or Product(s) with pesticide use limitations on the printed map. Locate the Active Ingredient (AI) or Product you intend to apply in this table and identify the code in the last column. This code indicates the specific limitation associated with that AI or Product. A limitation description for each code can be found below in the Codes and Limitations Table. If multiple Pesticide Use Limitation Areas (PULAs) are visible on the map, these tables provide information for the highlighted PULA.

If you are applying a pesticide that contains more than one Active Ingredient, or multiple Products, then multiple codes may apply. Follow the limitations for all codes when using this pesticide.

This document contains legal requirements for the use of certain pesticides. Do not modify any text, graphics or coloration or otherwise alter this document. ESPP Contact: ESPP@epa.gov Phone: 1-844-447-3813



■ Endangered Species Act (ESA)

- Intended to protect and promote the recovery of plants and animals in danger of becoming extinct.
- Section 7(a)(2) of the ESA requires federal (“action”) agencies to insure that any action they authorize, fund or carry out is not likely to jeopardize the continued existence of a federally-listed species or result in destruction or adverse modification of designated critical habitat.
- FIFRA “actions” subject to the consultation provisions of the ESA may include registering pesticides.

EPA Introduction (cont.)

■ **Endangered Species Protection Program (ESPP)**

- Helps promote the recovery of listed species
- Designed to help meet ESA obligations
- If limitations on pesticide use are necessary to protect listed species in that area, the information is relayed through Endangered Species Protection Bulletins
- Goal of the pesticide use limitations: to carry out responsibilities under FIFRA in compliance with ESA, without placing undue burden on agriculture and other pesticide users





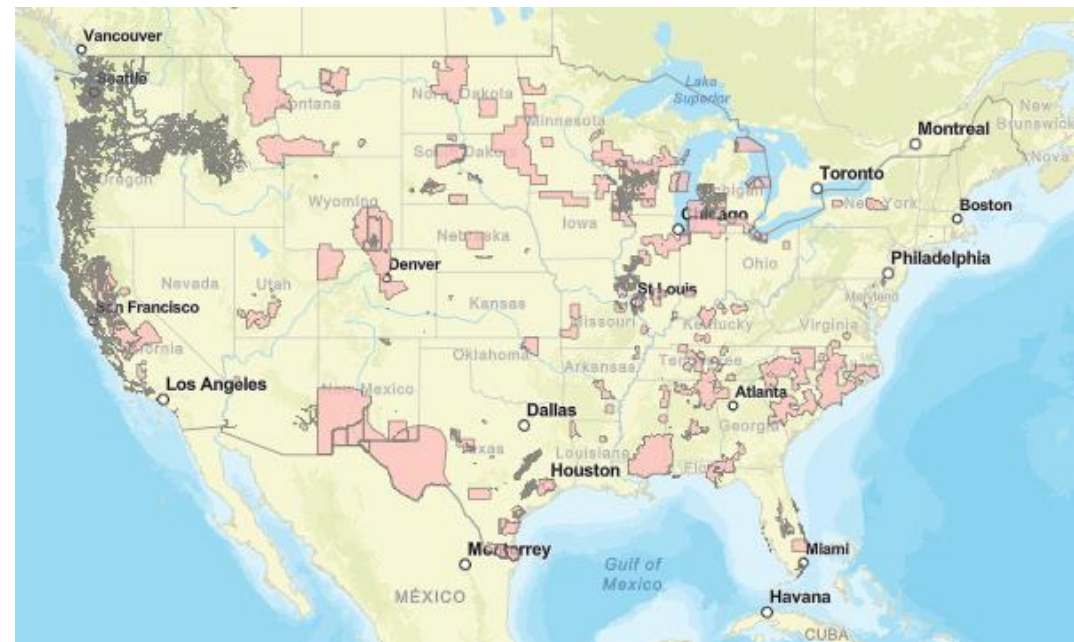
Why Web-based Mapping for Endangered Species Protections is Used

- Accessibility to a variety of Bulletins Live! Two Users
 - State Lead Agencies
 - Pesticide Applicators
 - Others



- When directed by a product label, pesticide applicators are required to visit the BLT website and follow any mitigations specified for the intended application area and product.

- Allows for location-specific protections
- Information provided by Bulletins includes
 - Location of use limitations
 - Products with limitations
 - Terms of the limitation
 - Does not include identification of species





When Does EPA Create Bulletins?

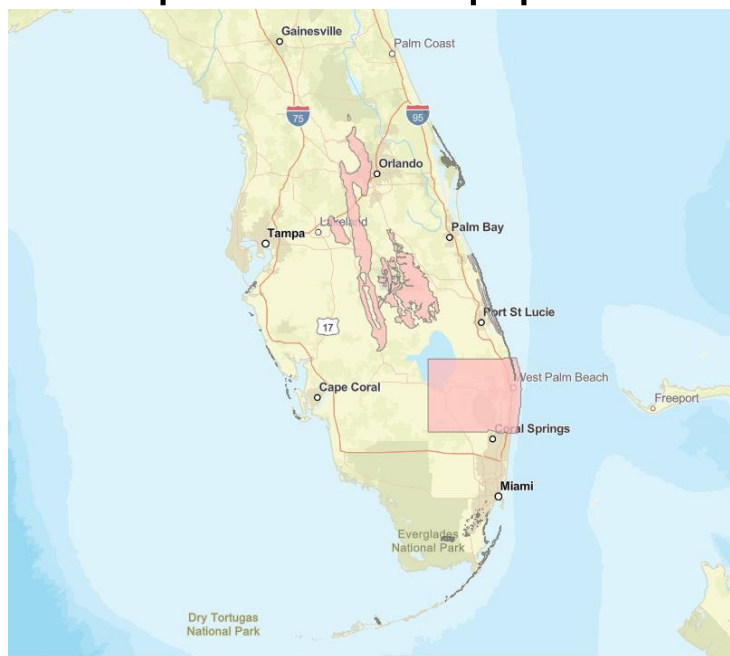


- If geographically explicit label instructions are needed, then EPA may create Bulletins as part of its regulatory actions
- Goal of Bulletins is to protect listed species and/or their critical habitat in specific locations and, in some cases, during certain times of the year
- EPA plans to create additional Bulletins as it completes registration actions and ESA consultations



Pesticide Use Limitation Area (PULA) Versus a Bulletin

- Pesticide Use Limitation Area (PULA)- Geographic area where a pesticide limitation(s) specific to listed species applies



Endangered Species Protection Bulletin

Application Month: November 2023
Product: MALATHION BE INSECTICIDE (34704-452)
CLEAN CROP MALATHION BE INSECTICIDE

1 Areas where pesticide use must be limited are identified on the map. A legend is located beside the map to help pinpoint these locations.

2 Look below at the Pesticide Use Limitation Summary Table. This table lists the user selected Active Ingredient(s) (AI) or Product(s) with pesticide use limitations on the printed map. Locate the Active Ingredient (AI) or Product you intend to apply in this table and identify the code in the last column. This code indicates the specific limitation associated with that AI or Product. A limitation description for each code can be found below in the Codes and Limitations Table. If multiple Pesticide Use Limitation Areas (PULAs) are visible on the map, these tables provide information for the highlighted PULA.

If you are applying a pesticide that contains more than one Active Ingredient, or multiple Products, then multiple codes may apply. Follow the limitations for all codes when using this pesticide.

Endangered Species Protection Bulletin

Pesticide Use Limitation Summary Table

Product	AI	Use	Method	Form	Code
MALATHION BE INSECTICIDE (34704-452) Alternate: CLEAN CROP MALATHION BE INSECTICIDE	Malathion (NO INERT USE)	All Agricultural Uses	Aerial spray	Emulsifiable Concentrate	MA18
MALATHION BE INSECTICIDE (34704-452) Alternate: CLEAN CROP MALATHION BE INSECTICIDE	Malathion (NO INERT USE)	All Agricultural Uses	Ground spray	Emulsifiable Concentrate	MA18
MALATHION BE INSECTICIDE (34704-452) Alternate: CLEAN CROP MALATHION BE INSECTICIDE	Malathion (NO INERT USE)	Mosquito Adulticide	Aerial spray	Emulsifiable Concentrate	MM1
MALATHION BE INSECTICIDE (34704-452) Alternate: CLEAN CROP MALATHION BE INSECTICIDE	Malathion (NO INERT USE)	Mosquito Adulticide	Ground spray	Emulsifiable Concentrate	MM1

Codes and Limitations Table

Code	Limitation
MA18	Follow one of these measures: 1. Apply malathion only when wind is blowing away from pine rockland habitat OR 2. Use a 50-foot ground buffer from pine rockland habitat, and an aerial buffer from pine rockland habitat according to application rate (1) 50 feet for <0.5 lbs ai/A; (2) 75 feet for 0.5 - <1 lb ai/A; (3) 150 feet for 1-2.5 lbs ai/A; (4) 200 feet for >2.5 lbs ai/A. Buffer sizes may be reduced by 25 feet for application rates (1) and (2) if a full swath displacement upwind is used during aerial application. Buffer sizes may be reduced by 50 feet for application rates (3) and (4) if a full swath displacement upwind is used during aerial application. Habitat: Pine rockland is an open habitat only found in South Florida, and consists of widely-spaced slash pine trees towering over savanna-like growth on sand and exposed sandstone rocks. The vegetation in this low-growing savanna is composed of a large variety of shrubs and small plants, including saw palmettos, small palms, grasses, and flowering plants.
MM1	Where feasible, avoid application. If avoidance is not feasible or impairs the ability of the mosquito control district or agency to protect the public's health and welfare, coordinate with the local FWS Ecological Services field offices to determine appropriate measures to ensure the proposed application is likely to have no more than minor effects on the species (PVS points of contact are available through the Information, Planning, and Consultation (IPAC) website https://ecos.fws.gov/ipac/). The applicator must retain documentation of the technical assistance and the agreed upon species-specific measures that were implemented.

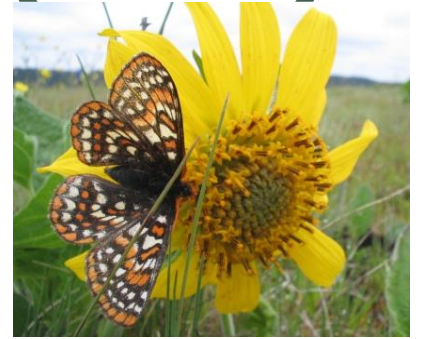
Endangered Species Protection Bulletin

This document contains legal requirements for the use of certain pesticides. Do not modify any text, graphics or coloration or otherwise alter this document. ESPP Contact: ESPP@epa.gov Phone: 1-844-447-3813

- Bulletin – The PDF from the Bulletins Live! Two application that provides the limitation information for your application site and month
 - If you would like to save the Bulletin for your own records, you can



Pesticide Use Limitation Area (PULA) Versus Species Range



- PULAs should not be confused with species ranges
- Species range maps show where listed species live, are suspected to live, and areas that impact the species' survival in some way
- PULAs are intended to apply only to areas where pesticide use limitations are needed and may be any of the following:
 - a small area within a species range;
 - applicable only to certain habitats within a species' range; or
 - applicable anywhere a use site is located within a species' range

Using and Understanding Bulletins Live! Two

- Topics Covered During the Demonstration
 - How to get started by reading the label
 - Using the map application tools
 - Identifying the intended pesticide application area
 - Selecting the application month
 - Refining your search
 - Selecting a PULA
 - Saving/Printing a PDF of a Bulletin, if you would like to save one for your own records.
 - Understanding the components of the Bulletin





Fyfanon ULV Mosquito
EPA Reg No 279-3539

MALATHION GROUP 1B INSECTICIDE

Fyfanon® ULV Mosquito

ULTRA LOW VOLUME CONCENTRATE INSECTICIDE

FOR USE ONLY BY FEDERAL, STATE, TRIBAL, OR LOCAL GOVERNMENT OFFICIALS RESPONSIBLE FOR PUBLIC HEALTH OR VECTOR CONTROL, OR BY PERSONS CERTIFIED IN THE APPROPRIATE CATEGORY OR OTHERWISE AUTHORIZED BY THE STATE OR TRIBAL LEAD PESTICIDE REGULATORY AGENCY TO PERFORM ADULT MOSQUITO CONTROL APPLICATIONS, OR BY PERSONS UNDER THEIR DIRECT SUPERVISION.

DISCLAIMER:
This example is only for demonstrating where to find an EPA Reg. No. on a label, it is not intended as a product endorsement

ACTIVE INGREDIENT:
Malathion* 96.5%
OTHER INGREDIENTS: 3.5%
TOTAL: 100.0%

* O,O-dimethyl phosphorodithioate of diethyl mercaptosuccinate.
Contains 9.9 lbs. malathion per gallon

KEEP OUT OF REACH OF CHILDREN
CAUTION

SEE [OTHER PANELS] [INSIDE] [BOOKLET] [BACK PANEL] FOR ADDITIONAL PRECAUTIONARY STATEMENTS AND USE DIRECTIONS

EPA Reg. No. 279-3539
NET Contents: _____

EPA Est. No: XXXX-XXX-XXX

FMC
FMC Corporation
2929 Walnut Street
Philadelphia, PA 19104

Product of Denmark
© Fyfanon is a registered trademark of FMC Corporation or an affiliate

ACCEPTED
08/23/2023
Under the Federal Insecticide, Fungicide and Rodenticide Act as amended, for the pesticide registered under EPA Reg. No. 279-3539



Fyfanon ULV Mosquito
EPA Reg No 279-3539

MALATHION GROUP 1B INSECTICIDE

Fyfanon® ULV Mosquito

ULTRA LOW VOLUME CONCENTRATE INSECTICIDE

FOR USE ONLY BY FEDERAL, STATE, TRIBAL, OR LOCAL GOVERNMENT OFFICIALS RESPONSIBLE FOR PUBLIC HEALTH OR VECTOR CONTROL, OR BY PERSONS CERTIFIED IN THE APPROPRIATE CATEGORY OR OTHERWISE AUTHORIZED BY THE STATE OR TRIBAL LEAD PESTICIDE REGULATORY AGENCY TO PERFORM ADULT MOSQUITO CONTROL APPLICATIONS, OR BY PERSONS UNDER THEIR DIRECT SUPERVISION.

DISCLAIMER:
This example is only for demonstrating where to find an EPA Reg. No. on a label, it is not intended as a product endorsement

ACTIVE INGREDIENT:
Malathion* 96.5%
OTHER INGREDIENTS: 3.5%
TOTAL: 100.0%
* O,O-dimethyl phosphorodithioate of diethyl mercaptosuccinate.
Contains 9.9 lbs. malathion per gallon

KEEP OUT OF REACH OF CHILDREN
CAUTION

SEE [OTHER PANELS] [INSIDE] [BOOKLET] [BACK PANEL] FOR ADDITIONAL PRECAUTIONARY STATEMENTS AND USE DIRECTIONS

EPA Reg. No. 279-3539
NET Contents: _____

EPA Est. No: XXXX-XXX-XXX

FMC
FMC Corporation
2929 Walnut Street
Philadelphia, PA 19104

Product of Denmark
© Fyfanon is a registered trademark of FMC Corporation or an affiliate

ACCEPTED
08/23/2023
Under the Federal Insecticide, Fungicide and Rodenticide Act as amended, for the pesticide registered under EPA Reg. No. 279-3539



Using and Understanding Bulletins Live!

Two (cont.): *Old* label instructions

Endangered Species Requirements – Use of this product in a manner inconsistent with its labeling may pose a hazard to endangered or threatened species. When using this product, you must follow the measures contained in the Endangered Species Bulletin for the area in which you are applying the product. To obtain Bulletins, no more than six months before using this product, consult:

<https://www.epa.gov/endangered-species/endangered-species-protection-bulletins> or call 1-844- 447-3813. You must use the Bulletin valid for the month in which you will apply the product.



Using and Understanding Bulletins Live! Two (cont.): *New label instructions*

Endangered Species Requirements – Before using this product, you must obtain any applicable Endangered Species Protection Bulletins (Bulletins) within six months prior to or on the day of application. To obtain Bulletins, go to Bulletins Live! Two (BLT) at <https://www.epa.gov/pesticides/bulletins>. When using this product, you must follow all directions and restrictions contained in any applicable Bulletin(s) for the area where you are applying the product, including any restrictions on application timing if applicable. It is a violation of Federal law to use this product in a manner inconsistent with its labeling, including this labeling instruction to follow all directions and restrictions contained in any applicable Bulletin(s). For general questions or technical help, call 1-844-447-3813, or email ESPP@epa.gov

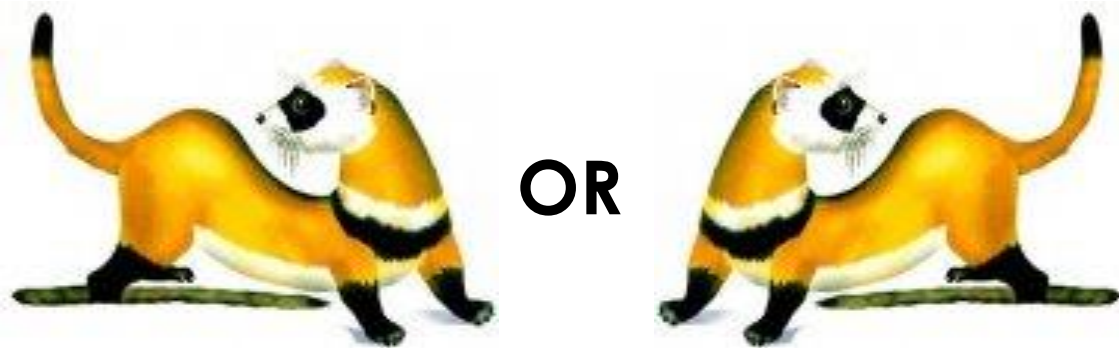




Using and Understanding Bulletins Live! Two (cont.)

Note there are two links, both direct to the same place:

<https://www.epa.gov/pesticides/bulletins>



<https://www.epa.gov/endangered-species/endangered-species-protection-bulletins>



Bulletins Live! Two Demonstration

- Environmental Topics
- Laws & Regulations
- Report a Violation
- About EPA

Endangered Species

CONTACT US

- Endangered Species Home
- About the Endangered Species Protection Program
- Assessing Pesticides Under the Endangered Species Act
- Endangered Species: Information For Pesticides Users
- Litigation on Endangered Species and Pesticides
- Bulletins Live!**
- For Kids

Endangered Species Protection Bulletins

Endangered Species Protection Bulletins are a part of EPA's Endangered Species Protection Program. Bulletins set forth geographically specific pesticide use limitations for the protection of threatened and endangered (listed) species and their designated critical habitat.

- [Obtain Bulletins using EPA's Bulletins Live! Two application.](#)
- [Read the tutorial Bulletins Live! Two.](#)
- [Go to the quick start guide.](#)
- [View the April 2019 webinar for Bulletins Live! Two.](#)
- [Learn How to locate the EPA Registration number to search for product in Bulletins Live! Two.](#)

If your pesticide label directs you to this website, you are required to follow the pesticide use limitation(s) found on your label and in the Bulletins Live! Two system for your intended application area, pesticide product, and application month. You may not see any geographically specific use limitations for the product you are applying even if your label directed you to this website because either:

1. EPA has not yet completed the process of identifying whether additional geographically specific use limitations are needed; or
2. there are no additional geographically specific use limitations required for the time period and location you plan to apply the pesticide product.

EPA continues to complete Endangered Species Act consultations and update the Bulletins Live! Two system with additional geographically specific use limitations that may be applicable to your pesticide product in the future. Therefore, before you apply a pesticide, check to see if new or additional directions for the product have been added to Bulletins Live! Two. It's important to note, you have a six-month window to obtain a bulletin before you apply a pesticide (e.g., you

EPA Summary



- Follow the labeling instructions
- If directed by the product label, visit the [Bulletins Live! Two website](#) to check for any Bulletins for your application site and month
- If you would like to save a copy of the Bulletin for your own records, you can
- If your application location changes or the application timing is to occur later than the intended application month that you originally checked, check BLT again
- Contact the ESPP help desk to resolve any questions you may have

EPA Frequently Asked Questions- General

- The ESPP help desk inbox (espp@epa.gov) and hotline (1-844-447-3813) receives inquiries a few times per month on average.
 - If a human doesn't answer when you call by phone, please leave a message and a human will get back to you.
 - Sometimes we can respond to email more quickly. If your inquiry is especially urgent, write URGENT in the email subject line.
- More inquiries are received when a new Bulletin is released
- Some local pesticide regulators or trade groups will bundle questions and send them directly to the point of contact for a specific chemical.
- Following are some common questions that have been submitted

EPA Frequently Asked Questions (cont.)

- *Are Bulletins enforceable?*
 - Yes. When directed by a product label, pesticide applicators are required to visit the BLT website and follow any additional mitigations in the intended application area. When users are directed to check Bulletins Live! Two on a pesticide label, Bulletins are enforceable mitigations under FIFRA.
 - Not following the limitation on your Bulletin is a misuse of the pesticide and enforceable under FIFRA
 - If this misuse results in “take” of listed species, the action is also enforceable under the Endangered Species Act by the US Fish and Wildlife Service and National Marines Fisheries Service

EPA Frequently Asked Questions (cont.)

- *Why can't we see what species the mitigations are for?*
 - At the request of the USFWS and NMFS, species identifications were removed to discourage possible collection or disturbance of listed species by the public.



EPA Frequently Asked Questions (cont.)

- *My state has several listed species, but the limitations on Bulletins don't seem to match, why?*
 - Bulletins may rely on range data from USFWS and NMFS or are identified through the consultation process with these federal services, which may differ from state agencies by comparison
 - Bulletins are for federally-listed (not state-listed) species.
 - Not all species may be at risk and need Bulletins

EPA Frequently Asked Questions (cont.)

What browsers are compatible with Bulletins?

- Google Chrome;
- Microsoft Edge;
- Mozilla Firefox; or
- Safari.
- Looking into improving BLT compatibility with mobile devices (Tablets, Phones, etc.) - see following slides about phone use
- BLT works on most web formats. Not all have been tested. Please share feedback specific to your device and version to the ESPP help desk.

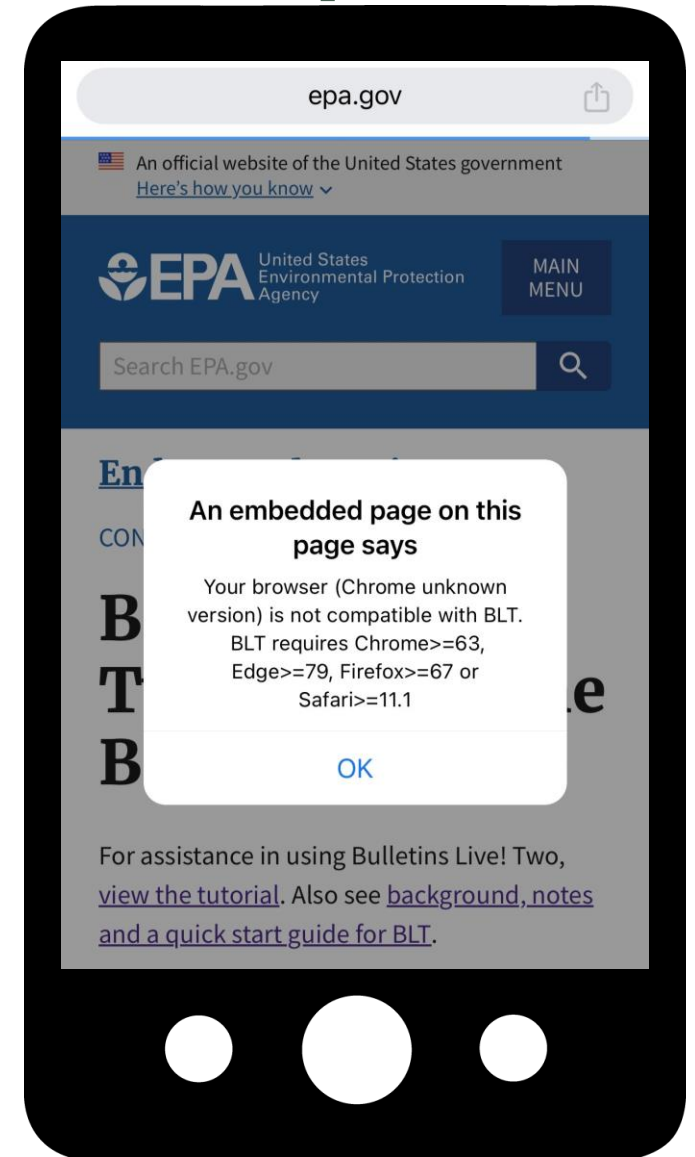


EPA Notes about using BLT on the phone

- *Does the BLT website work on my cell phone web browser?*
 - Yes, it should be functional on the phone.
 - There was a period of time earlier in 2023 where it was not working on phones, this has been addressed.
 - Contact us and provide the cell phone make/model and web browser if you discover BLT is not working.
 - BLT does not currently exist as an app, you must use your cell phone's web browser to access it.

EPA Notes about using BLT on the phone

- It is possible you may get a warning message when accessing BLT on the phone.
 - Select “OK” and you should be able to continue using BLT.
 - If you have difficulty reading table text in the website, try holding the phone horizontally.
 - If you *still* have difficulty reading text in any website tables, download the pdf to your phone & read from that.
 - Text may sometimes wrap oddly in the phone browser, depending on the phone screen size.





Frequently Asked Questions (cont.)

- *Why doesn't the search engine on the Bulletins web application include names for products?*
 - Search using EPA registration numbers. Registration numbers remain consistent.
 - EPA relies on the trade names as supplied by the registrant at the time the Bulletin is created. This name will fill in as you enter the EPA registration number in the search bar.

EPA Frequently Asked Questions (cont.)

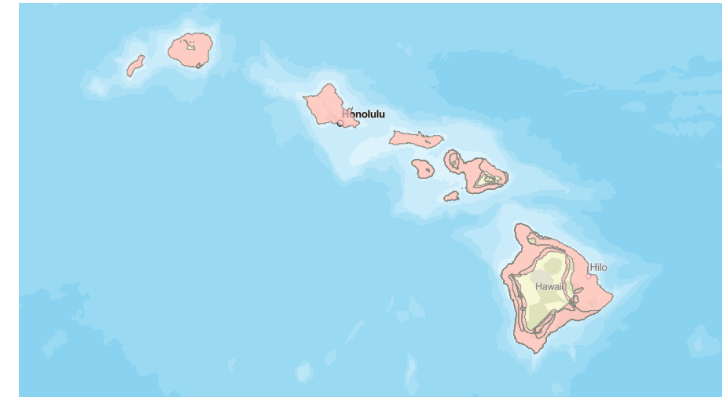
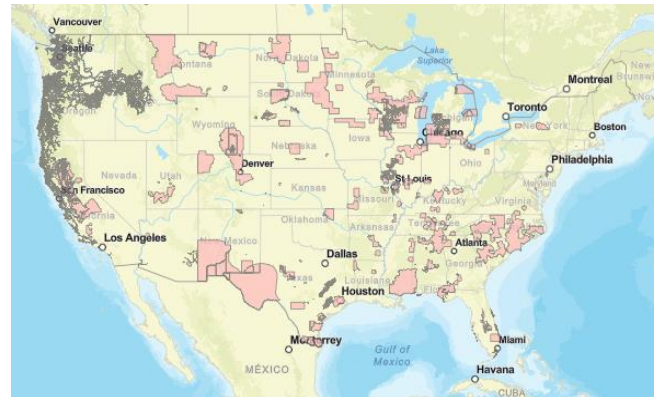
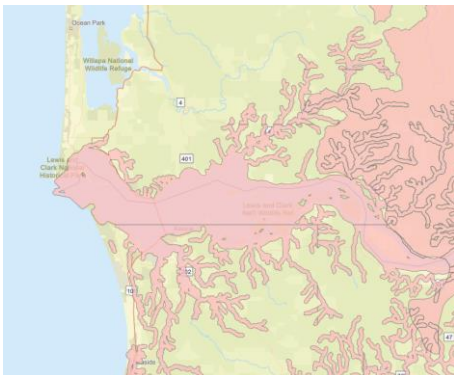
- *What is the difference between an EPA registration number and other numbers found on the product label?*
- **EPA registration number:** An EPA registration number can be found on the product label. Look for “EPA Reg. No.” followed by two or three sets of numbers.
 - If your product's registration number has two parts (ex. 1234-12), it has a primary registration number. This is the number that should be entered into the product search in Bulletins Live! Two.
- **Supplemental Distributor Product Number:** If your product's registration number has three parts (ex. 1234-12-123), you have a supplemental distributor product. These products have the same chemical composition and efficacy as primary products, but often have different brand or product names. Enter the first two parts of this registration number (ex. 1234-12-123) into the EPA registration search in Bulletins Live! Two.
- Continues on next slide

EPA Frequently Asked Questions (cont.)

- **Special Local Needs Number:** If your label has “EPA SLN No.” followed by the two-letter state designation, then a 6-digit number (ex. EPA SLN No. NC950034). This is a Special Local Need registration number (SLN number) also known as a FIFRA Section 24(c) Registration Number. These Registrations are issued by the states to meet special local needs.
 - Searching with an SLN number will yield no results within the Bulletins Live! Two EPA registration number search. A label that has an SLN should also have a primary registration number that can be entered in BLT.
 - You need to be aware of and follow pesticide use limitations in your area according to both the state AND federal requirements.
- **Establishment Number:** The EPA Establishment Number “EPA Est. No.” should be printed near the EPA Reg. No. Letters normally appear in the middle of the EPA Est. No., setting it apart from the EPA Reg. No. (ex. EPA Est. No. 12345-XY-123). The EPA Est. No. is also typically longer than the EPA Reg. No. It identifies the facility that produced the pesticide and is not used in BLT.

EPA Frequently Asked Questions (cont.)

- *How often are bulletins updated? For example, what if the spatial area was built using particular information about a species or its habitat that then changes?*
 - Generally, PULA boundaries and/or Bulletins mitigations will not change until the next registration action occurs.
 - However, EPA is exploring options for the broader ESA strategies to allow for changes to PULAs and mitigation options as data evolves



EPA Frequently Asked Questions (cont.)

- *Understanding the 6-month window between obtaining a Bulletin and application of the pesticide, and if there are changes/additions to a PULA after the Bulletin is printed and before the pesticide is applied.*
- EPA continues to complete Endangered Species Act consultations and update the Bulletins Live! Two system with additional geographically specific use limitations that may be applicable to your pesticide product in the future. Therefore, before you apply a pesticide, check to see if new or additional directions for the product have been added to Bulletins Live! Two. It's important to note, you have a six-month window to obtain a bulletin before you apply a pesticide (e.g., you can obtain a bulletin January 1-July 1 if you plan to apply the pesticide on July 1). If the application month needs to be later, then you need to check the system again during the six month window before the new date (e.g. You can obtain a bulletin February 1-August 1 if you intend to apply August 1 instead of July 1).

EPA Where to direct questions?


- Endangered Species Protection Program
 - Help desk inbox
 - espp@epa.gov
 - Hotline
 - 1-844-447-3813
 - Your label may have several phone numbers on it. Review it carefully to ensure you are calling the BLT number.

EPA Resources

- Bulletins Live! Two
 - <https://www.epa.gov/endangered-species/bulletins-live-two-view-bulletins>
- Tutorial
 - <https://www.epa.gov/endangered-species/bulletins-live-two-bl-tutorial>
- Quick Start Guide
 - <https://www.epa.gov/endangered-species/endangered-species-protection-bulletins#quick>
- How to locate the EPA registration number to search BLT
 - <https://www.epa.gov/endangered-species/endangered-species-protection-bulletins#how-to>

Submit Your Related Questions

Secure | <https://app.gotowebinar.com/index.html#889888307/6101116743820216835/3028182954814294029>



Understanding Bulletins Live! Two

Original Webinar 2019: Steve Lennartz, BLT System Administrator

This 2023 Webinar is an update of the 2019 webinar





Brian Anderson, Associate Director

Amy Adams and Stephen Muela, BLT System Administrators

Environmental Fate and Effects Division

Office of Pesticide Programs, US EPA



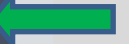
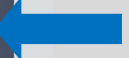
Questions



Ask the staff a question

Exit

Send





Questions?