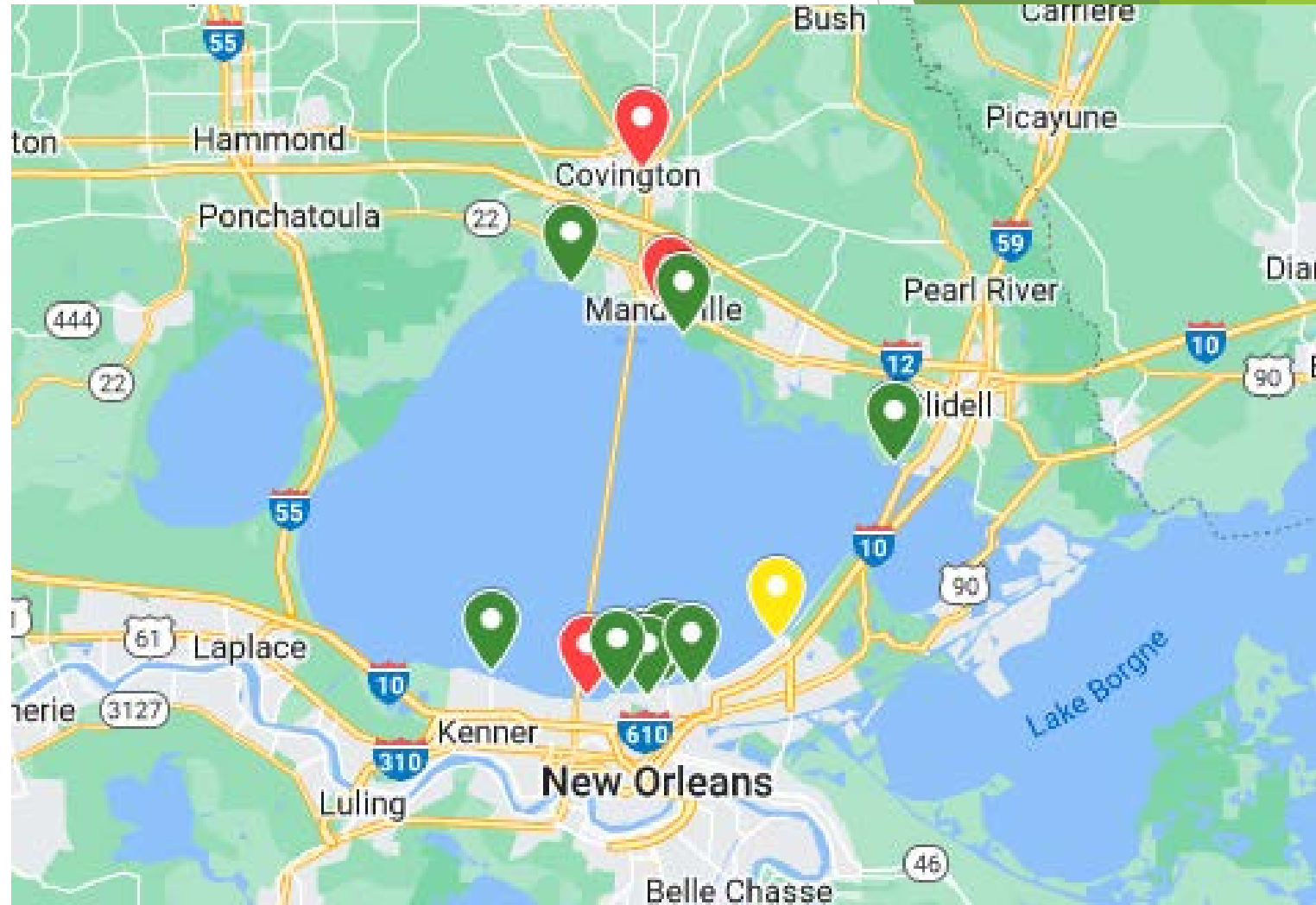


# Lake Pontchartrain - Threats and Opportunities

Matt Rota  
Healthy Gulf  
May 22, 2023

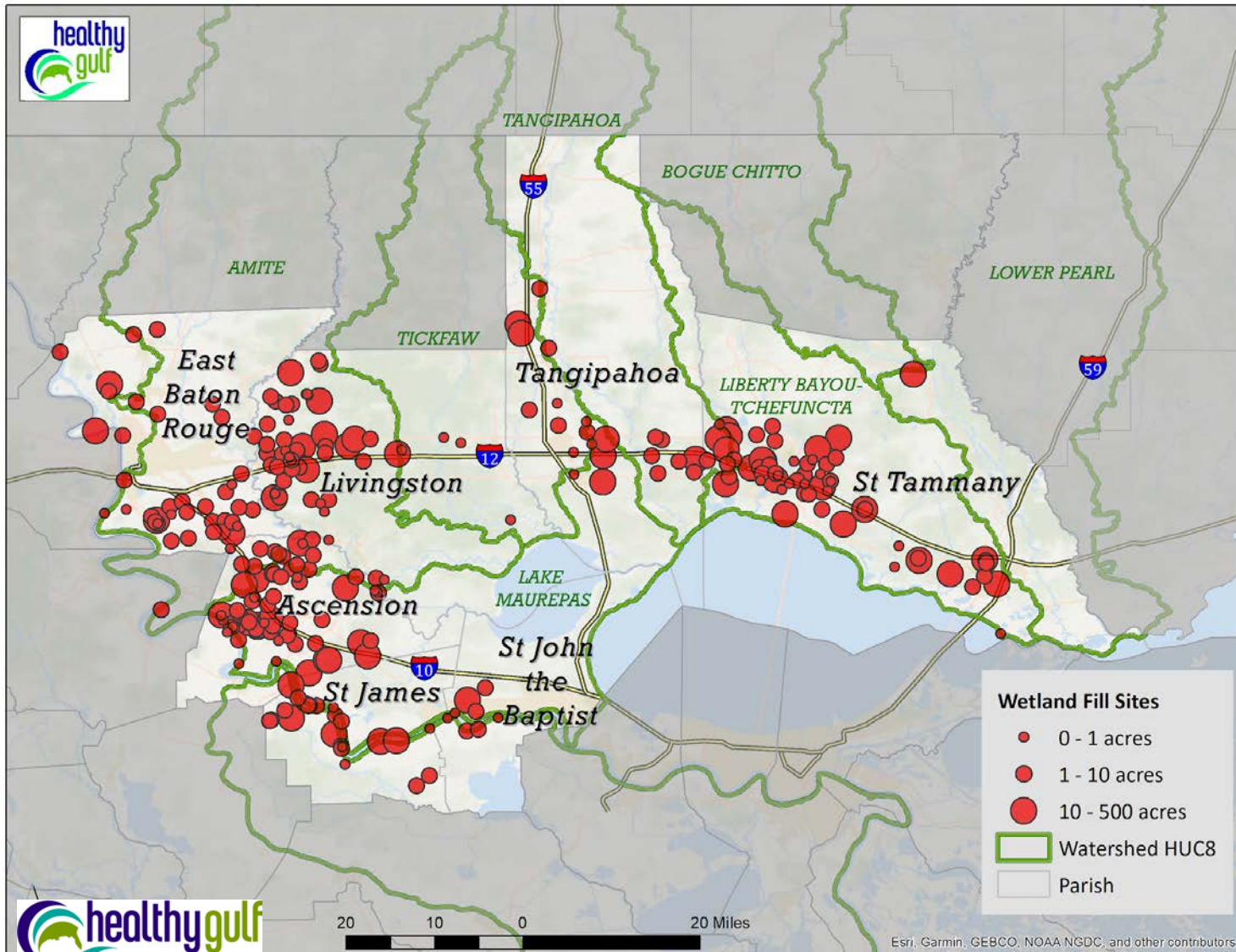
# Monitoring

- Regular (real-time - weekly) Monitoring
- Increase monitoring to Lake Maurepas and Northshore rivers
- Increase parameters, including nitrogen, ammonia, phosphorus, dissolved oxygen, chlorophyll a, turbidity



# Raising Homes - protecting wetlands

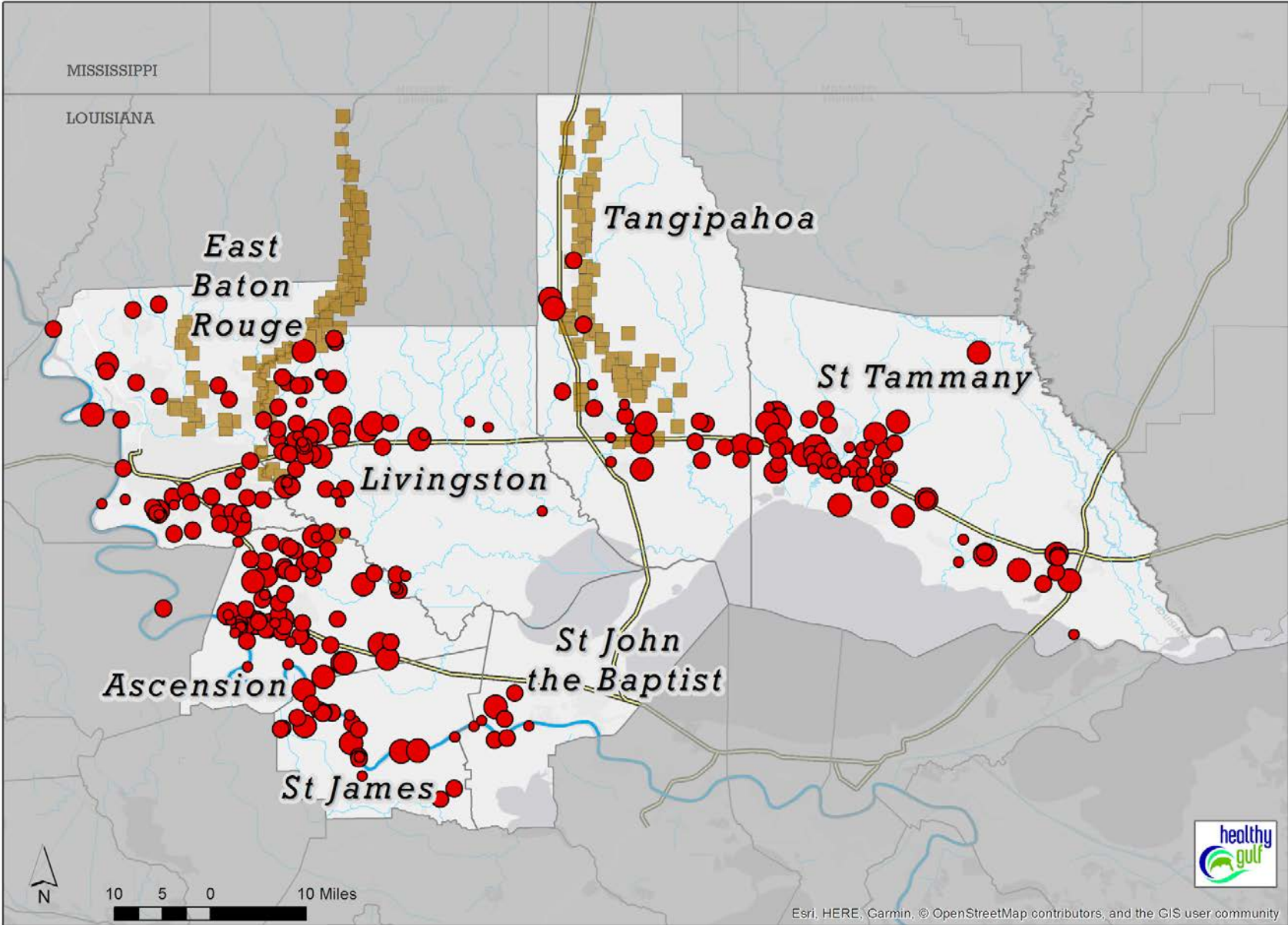
Assist in funding elevation of homes and structures on the northshore



Parish	2014	2015	2016	2017	2018	Total
East Baton Rouge	14	24	37	48	70	} 1,215
Livingston	48	67	14	369	475	
Ascension	509	234	262	58	93	} 1,296
St James	1	191	40	47	121	
St John the Baptist	25	150	0	3	0	} 1,414
St Tammany	497	92	78	64	509	
Tangipahoa	5	61	54	28	20	
<b>Total</b>	<b>1,099</b>	<b>819</b>	<b>485</b>	<b>617</b>	<b>1,288</b>	



# Restore abandoned gravel mines





# Wetland Municipal Sewage Assimilation

June 25, 2006 (pre discharge)



November 29, 2011 (60 months discharge)





# Education Programs



# Access to the Lake-Lincoln Beach



- Money to local organizations
- Local Control



# Environmental Justice

**EPA EJScreen** EPA's Environmental Justice Screening and Mapping Tool (Version 2.11)

Please note: Territory data (except Puerto Rico) is not available as comparable to the US. It is only comparable to the territory itself by using the 'Compare to State' functionality. Likewise, some of the indicators may not be available for territories.

[EJScreen Website](#) | [Mobile](#) | [Glossary](#) | [Help](#)

Compare to US  Compare to State


**Environmental Justice Indexes**

- Particulate Matter 2.5
- Ozone
- Diesel Particulate Matter
- Air Toxics Cancer Risk
- Air Toxics Respiratory HI
- Traffic Proximity
- Lead Paint
- Superfund Proximity
- RMP Facility Proximity
- Hazardous Waste Proximity
- Underground Storage Tanks
- Wastewater Discharge

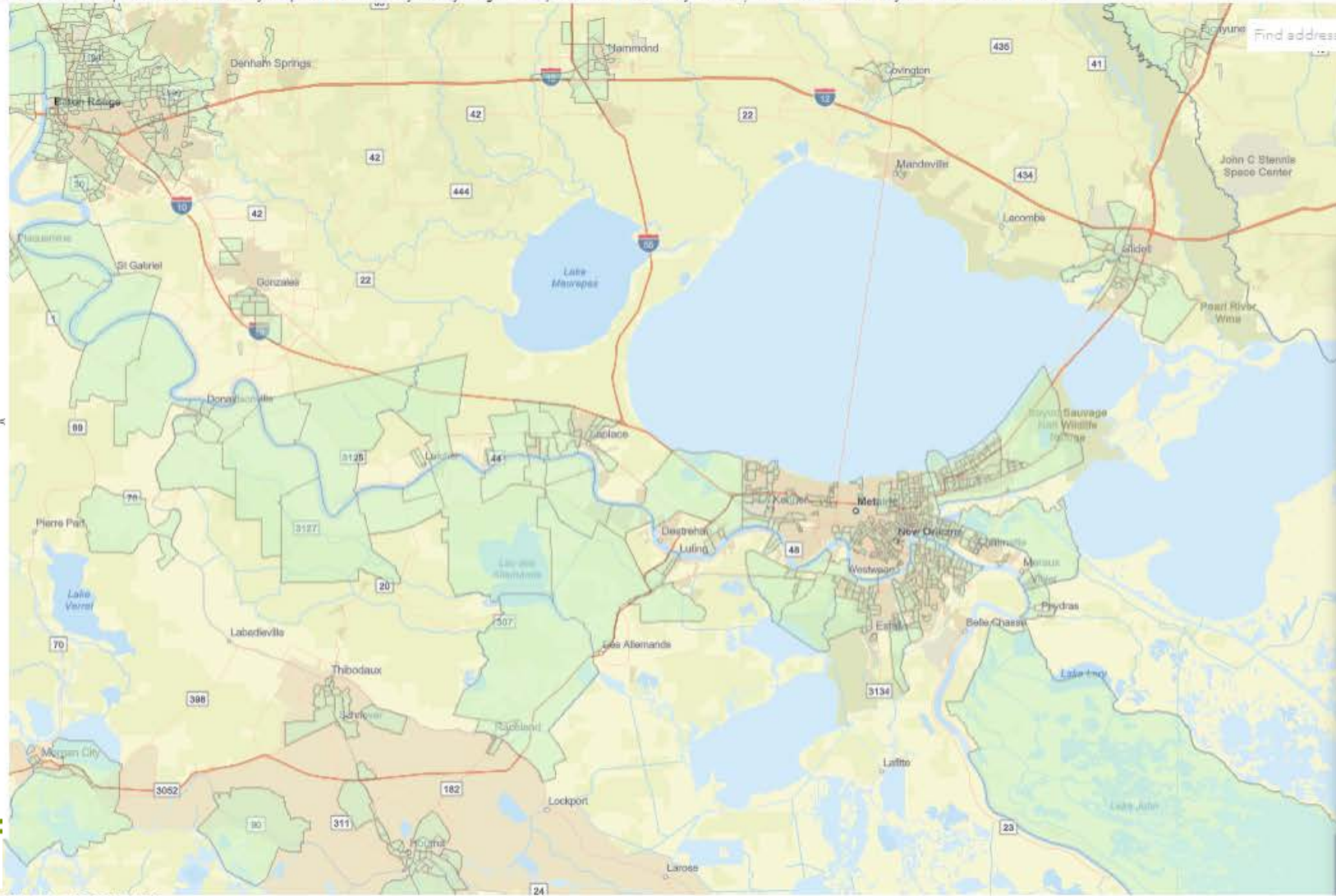
**Supplemental Indexes**

- Pollution and Sources
- Socioeconomic Indicators
- Health Disparities
- Climate Change Data
- Critical Service Gaps
- Additional Demographics

**Threshold Map**



Download selected 99,555 records. (Field Descriptions)



Find address or place

**Map Contents**

- EJ Index (State)

There are 99,555 block groups where 1 or more indexes are within 80-100 percentile

**Indexes Threshold Map Widget**

**Step 1. Select type of Index:**

EJ Indexes  Supplemental Indexes

**Step 2. Select location:**

Compare to US  Compare to State

**Step 3. Select Index percentile range:**

Lower bound: 80 Upper bound: 100

**Step 4. Select number of indexes or individual Indexes (maximum 12) within percentile range:**

At least 1 of the indexes is within the percentile range

Or

- Particulate Matter 2.5
- Diesel Particulate Matter
- Air Toxics Cancer Risk
- Air Toxics Respiratory HI
- Lead Paint
- RMP Facility Proximity
- Underground Storage Tanks
- Ozone
- Air Toxics Cancer Risk
- Traffic Proximity
- Superfund Proximity
- Hazardous Waste Proximity
- Wastewater Discharge

Add To Map Reset

Download selected 99,555 records. (Field Descriptions)



# Thank You

Matt Rota  
Healthy Gulf  
[matt@healthygulf.org](mailto:matt@healthygulf.org)