

COASTAL PROTECTION AND RESTORATION AUTHORITY

Louisiana's Coastal Program

Pontchartrain Basin

BRIAN LEZINA, CHIEF OF PLANNING

MAY 23, 2023



Louisiana Coastal Protection and Restoration Authority



Single state entity with authority to articulate a clear statement of priorities to achieve **comprehensive coastal protection and restoration** for Louisiana.

Mandate is to develop, implement, and enforce a comprehensive **coastal protection and restoration master plan**.



WHAT IS THE COASTAL MASTER PLAN?

SCIENCE-BASED, STAKEHOLDER INFORMED

- Prioritization effort
 - How can the state spend its money most cost-effectively over the next 50 years to reduce storm surge-based flood risk and restore and maintain coastal wetlands?
- Developed through a process that ensures adaptive management
 - Required by law to be updated every 6 years
- Built on world class science and engineering
- Advances a comprehensive and integrated approach to restoration and risk reduction
- Incorporates extensive public input and review
- Illustrates how people and communities will experience a changing coast to allow preparation and adaptation into the future.



Incorporating best available science **Examples**

- Input Data
 - Landscape inputs
 - Storm suite
 - Asset database
- Modeling Improvements
 - Hydrologic resolution
 - Vegetation response
- Environmental Drivers (Scenarios)
 - Reduced uncertainty
 - Subsidence
 - Climate uncertainty
 - Sea level rise
 - Co-varying climate driven variables

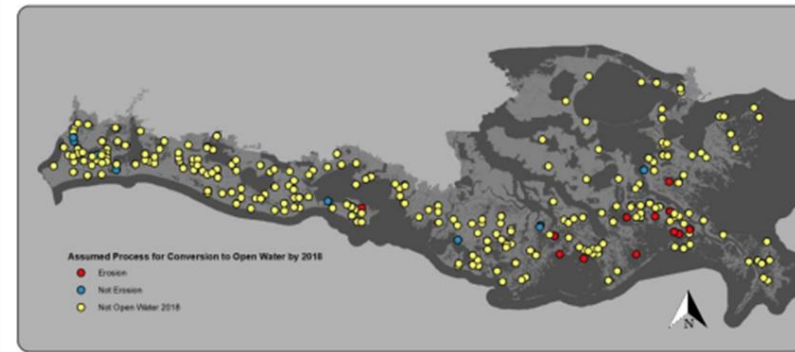
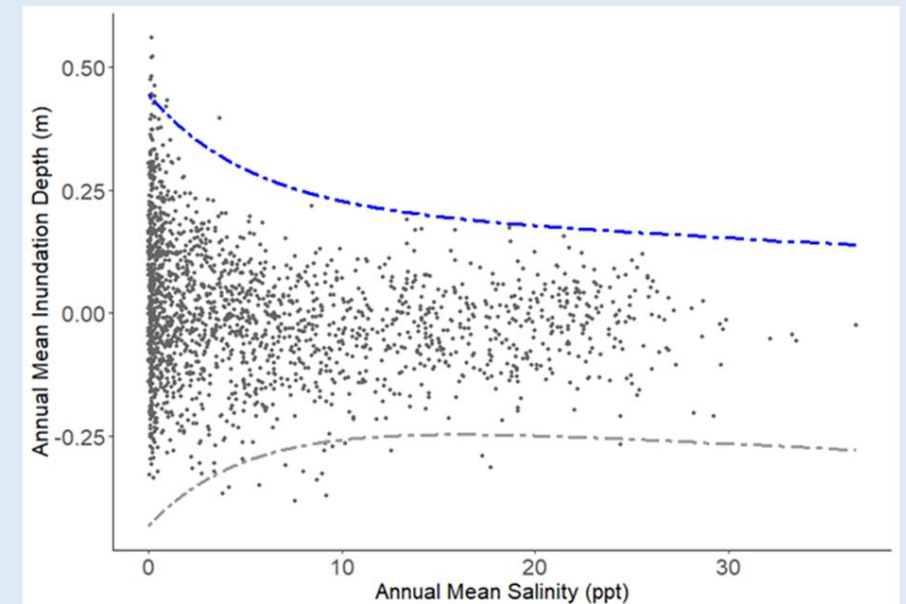
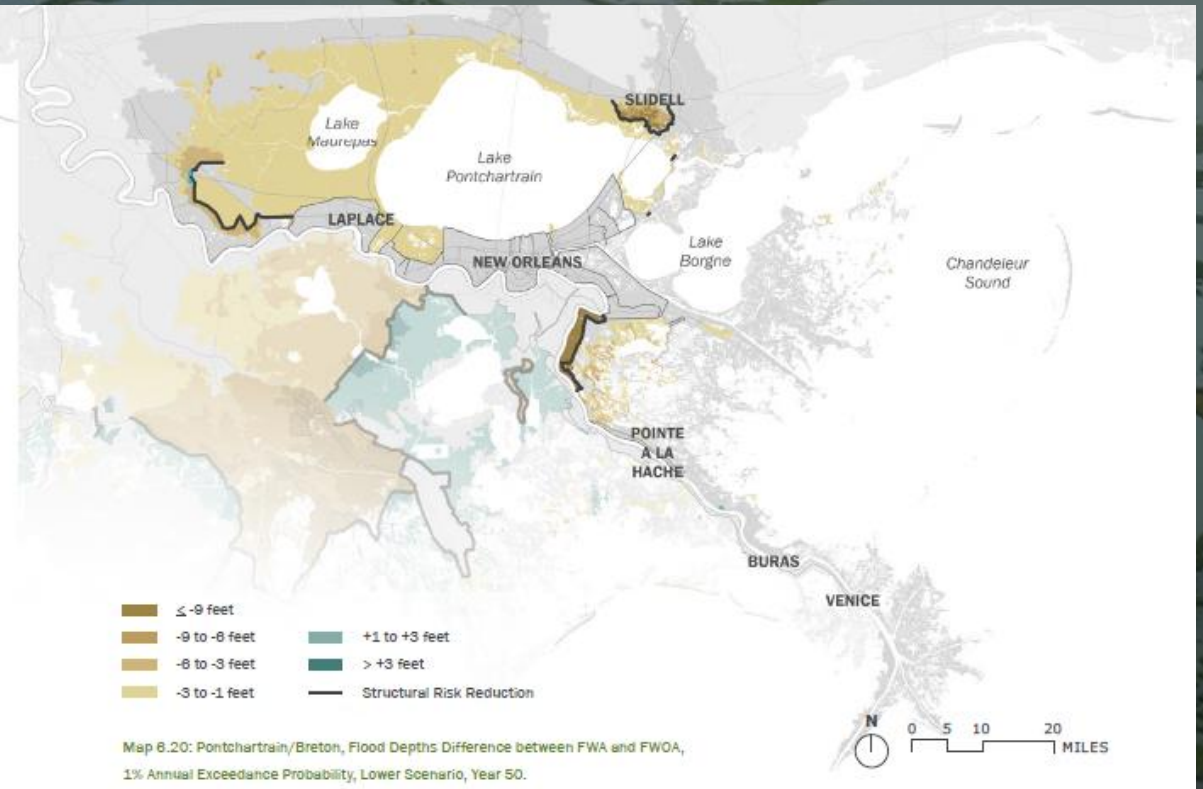
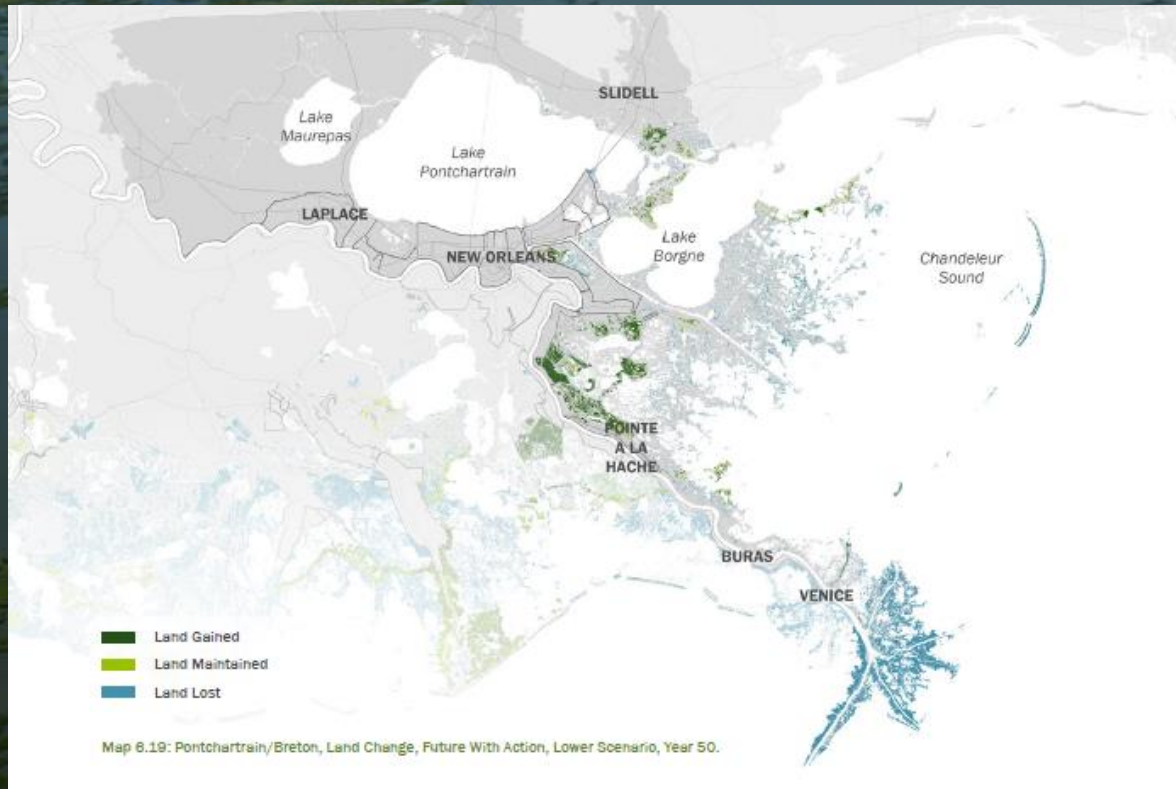


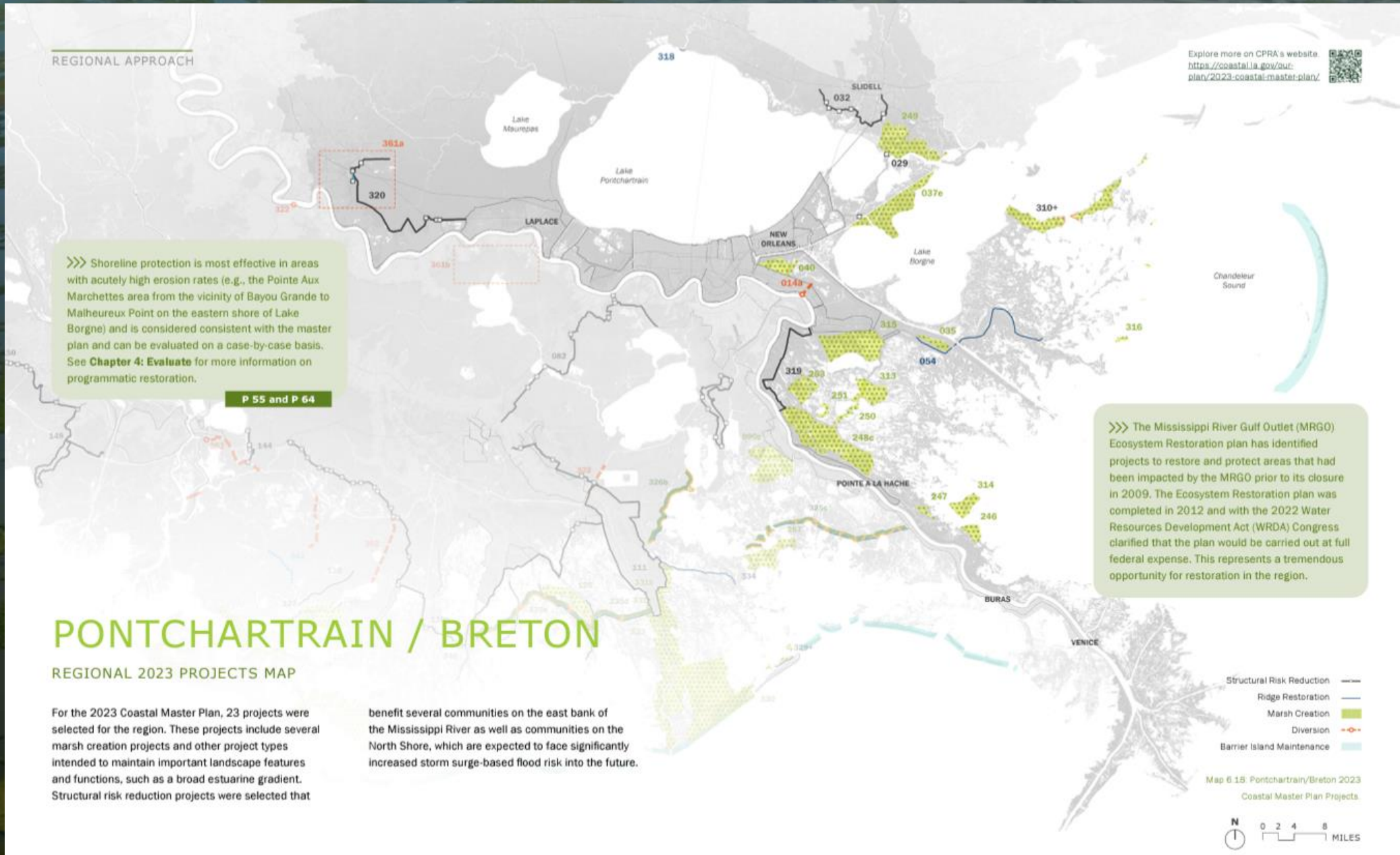
Figure A5. CRMS sites assessed for this exercise with an indication of whether permanent vegetation loss occurred prior to 2018 and which of those are thought to be due to erosion.



Relationship (from CRMS data analysis) used to define water depth limitation. Lines are the 0.5th (gray) and 99.5th percentiles.



What the Plan Delivers - Projects



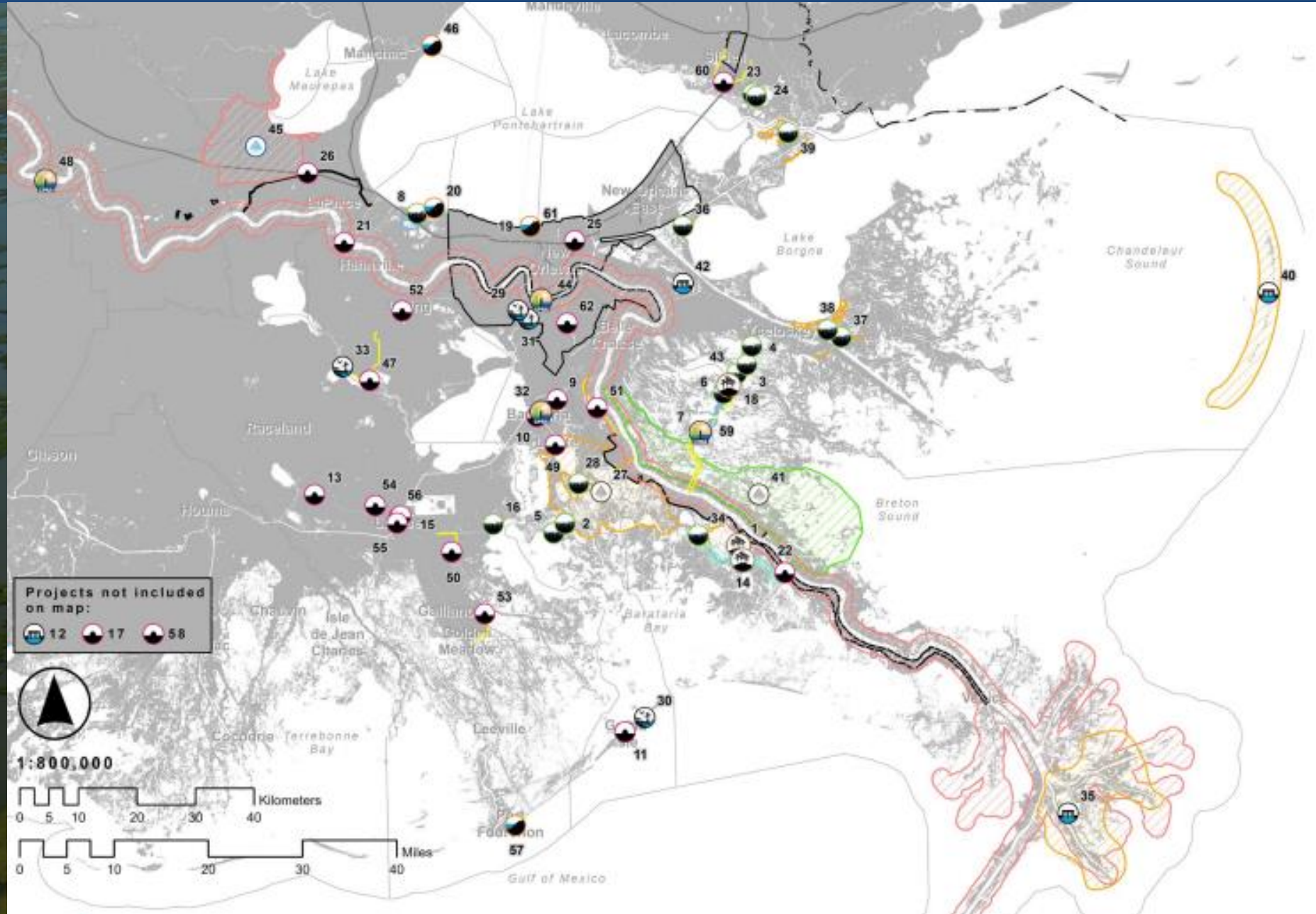
What the Plan Delivers - Projects





Current and Near-term Activities

Southeast FY 24



Reconnecting the River SEDIMENT DIVERSIONS





11 MILES

artificial reef breakwater

\$66.6M

for Construction, O&M,
Monitoring

Funded by:



NRDA

Estimated completion:

EARLY 2023





CLIMATE STRATEGIES AND ACTIONS

Immediate, aggressive, and comprehensive action is necessary to reduce Louisiana's GHG emissions to net zero by 2050 and realize social, economic, environmental, equity, and resilience co-benefits for the state. The plan consists of **28 strategies** (high-level approaches), listed below, and **84 actions** (practical and implementable policy steps) focused on the following areas critical to a decarbonized future for Louisiana.



Clean Energy Transition

- 1:** Shift towards a clean, renewable, and resilient power grid.
- 2:** Increase access to and deployment of distributed energy resources.



Industrial Decarbonization

- 3:** Monitor, inventory, certify, and support industrial decarbonization.
- 4:** Improve efficiencies in and modernization of industrial processes and facilities.
- 5:** Accelerate industrial electrification, switching to low- or no-carbon fuels and low- or no-carbon feedstocks.
- 6:** Promote reduced-carbon materials.



Actively Managed Methane Emissions

- 7:** Increase and mobilize resources for decommissioning legacy oil and gas infrastructure.
- 8:** Monitor and regulate methane emissions.



Transportation, Development, and the Built Environment

- 9:** Accelerate adoption and accessibility of low- and zero-emission vehicles and fuels.
- 10:** Reduce vehicle miles traveled and increase transportation efficiencies.
- 11:** Increase urban, rural, and regional public transit service.
- 12:** Coordinate land use planning to reduce sprawl and support healthy and resilient communities.
- 13:** Improve the efficiency and resilience of homes and non-residential buildings.



STATE OF LOUISIANA
GOVERNOR JOHN BEL EDWARDS

LOUISIANA CLIMATE ACTION PLAN



CLIMATE INITIATIVES TASK FORCE
RECOMMENDATIONS TO THE GOVERNOR
February 2022



Natural and Working Lands and Wetlands

- 14:** Preserve and expand natural lands and urban green spaces to maximize climate mitigation and adaptation goals.
- 15:** Restore and conserve Louisiana's coastal wetlands to maximize climate mitigation and adaptation goals.
- 16:** Support the sustainable management and conservation of working agricultural and forestry lands.



An Inclusive, Low-Carbon Economy

- 17:** Build a more inclusive and resilient economy for all Louisiana residents.
- 18:** Strengthen climate education, research, and innovation as a focus of Louisiana's energy transition.
- 19:** Prioritize Louisiana workers and businesses in the transition to a low-carbon economy.



Collaboration and Partnership to Ensure Successful Implementation

- 20:** Ensure Louisiana is prepared to maximize potential federal funding opportunities.
- 21:** Position Louisiana as a climate leader by engaging in national and regional dialogues and planning.
- 22:** Align climate action approaches across state government.
- 23:** Coordinate action with local government.
- 24:** Call upon the private sector to align their practices and play a leading role in climate action.
- 25:** Improve engagement with and track progress on outcomes for disadvantaged communities and Indigenous peoples.



Accountability and Adaptability to Ensure Lasting Success

- 26:** Advance an equitable, efficient, and sustainable siting and permitting process for new energy and infrastructure projects.
- 27:** Ensure that Climate Action Plan strategies are effectively and transparently implemented.
- 28:** Track progress in reducing net GHG emissions reductions and adapt the approaches taken as needed.



<p>\$14.9 Million</p> <p>National Marine Sanctuary Foundation</p> <p><i>High-Impact and Large Marine Debris Removal throughout the National Marine Sanctuary System</i></p>	<p>\$7.7 Million</p> <p>Gulf of Mexico Alliance</p> <p><i>Coordinated Large Marine Debris Removal in the Gulf of Mexico</i></p>	<p>\$4.9 Million</p> <p>Restore America's Estuaries</p> <p><i>Gulf of Mexico Community-based Oyster Recycling and Reef Restoration Network</i></p>	<p>\$4.5 Million</p> <p>Jefferson Parish</p> <p><i>Bucktown Marsh Restoration and Living Shoreline</i></p>
<p>\$4 Million</p> <p>Louisiana Department of Wildlife and Fisheries</p> <p><i>Coastal Land Conservation at Rockefeller Wildlife Refuge - Cameron Parish, Louisiana</i></p>	<p>\$1 Million</p> <p>Terrebonne Parish Consolidated Government:</p> <p><i>Restoring Louisiana Marshes: Protecting Sacred Sites, Increasing Tribal Resilience, and Reducing Flood Risk</i></p>	<p>\$822,000</p> <p>The Water Institute of the Gulf</p> <p><i>Enhancing Resilience of Southeast Louisiana's Asian American Fisherfolk Communities</i></p>	<p>\$737,000</p> <p>Wayti Services, LLC</p> <p><i>Caad Kuujaamnix/Bayou Sale Living Shoreline Design</i></p>
<p>\$715,000</p> <p>Coalition to Restore Coastal Louisiana</p> <p><i>Restoring Resilience Through Central Wetlands Reforestation Collective</i></p>	<p>\$490,000</p> <p>City of New Orleans</p> <p><i>Bayou Bienvenue Wetlands Triangle Habitat Restoration - Planning and Design</i></p>	<p>\$299,000</p> <p>Louisiana Sea Grant</p> <p><i>Fostering Community Partnership and Understanding Financial Vulnerabilities to Reduce Marine Debris and Enhance Louisiana's Resilience to Disaster</i></p>	<p>\$295,000</p> <p>Louisiana Sea Grant</p> <p><i>Consider Litter: Data-Driven, Community-Centered Marine Debris Prevention and Mitigation</i></p>

COASTAL PROTECTION AND RESTORATION AUTHORITY

Questions?

BRIAN LEZINA
BRIAN.LEZINA@LA.GOV
COASTAL.LA.GOV

