

What's in Your Indoor Air?

Mold



**Chemical reactions
in the air**



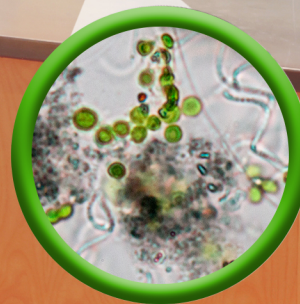
**Cooking-related
emissions**



Outdoor sources



**Emissions from candles,
incense or wood burning**



**Airborne allergens
and bacteria**



Printers



Cleaning activities

Particulate matter (PM) is a complex mix of solid and/or liquid particles suspended in air. These particles can vary in size, shape and composition. Exposure to these inhalable particles can affect your health and pollute your indoor environment.

To learn more, visit www.epa.gov/iaq.