



RCRA Corrective Action Cleanup + Productive Use

Economic Profile

Motor Manufacturing Plant

Murphy, North Carolina

CONTINUED USE



Rotating Electrical
Component
Manufacturer

CLEANUP OVERSEEN BY EPA

In 1967, this factory in Murphy, North Carolina, began producing rotating electrical components.

Manufacturing activities generated large quantities of hazardous wastes. Historical operations also released volatile organic compounds into groundwater via an underground storage tank. With oversight by EPA, the facility's previous operator, Northrup Grumman, designed and installed a groundwater extraction and treatment system in 1997 and continues to maintain the system. Contamination was reported under control in 2009.

Moog Inc. acquired the plant in 2003. Today, Moog is the largest industrial employer in Cherokee County. The Murphy factory makes high-tech motors for industrial applications, employing 400 people and generating more than \$89 million in annual sales.



EMPLOYEES

400



ANNUAL
SALES

\$89 million



ANNUAL
WAGES

\$30 million

For more information about RCRA and the economic benefits of site reuse, visit www.epa.gov/hw/learn-about-corrective-action



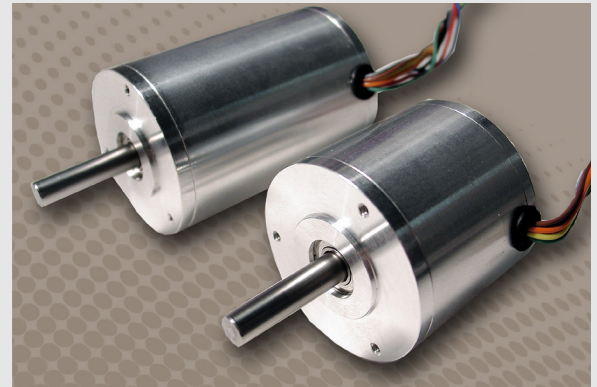


THE ABILITY TO CONTINUE TO UTILIZE THE SITE TO SUPPORT A MAJOR MANUFACTURING FACILITY HAS BEEN OF THE UTMOST IMPORTANCE TO CHEROKEE COUNTY AND OUR NEIGHBORING COUNTIES.

Randy Wiggins, Cherokee County Manager

The Murphy factory specializes in brush and brushless DC-type motors, solenoids and other components for electrical equipment. These motors also have important industrial applications due to their low power input and high efficiency. Brushless motors are used in speed and rotation control systems for the defense and aerospace industries.

With the site's cleanup ongoing, the facility has continued to grow and add jobs. In 2018, Moog announced it would invest \$1.8 million to expand its facility in Murphy and add 20 new jobs. This expansion was aided by the efforts of the North Carolina Department of Commerce, county and municipal officials and local community college systems. Through this collaboration, the town of Murphy was able to offer a \$50,000 performance-based grant to the company from the One North Carolina Fund, conditional on meeting job creation and capital investment requirements. Moog announced another expansion of more than \$2.3 million in 2020 and will receive a similar grant from the fund.



Products from Moog's Murphy factory are used in vital medical devices such as sleep apnea machines.



Key partners in the project to bring Moog's recent expansion to Murphy included the North Carolina Community College System, Cherokee County, the town of Murphy and the Tennessee Valley Authority.

