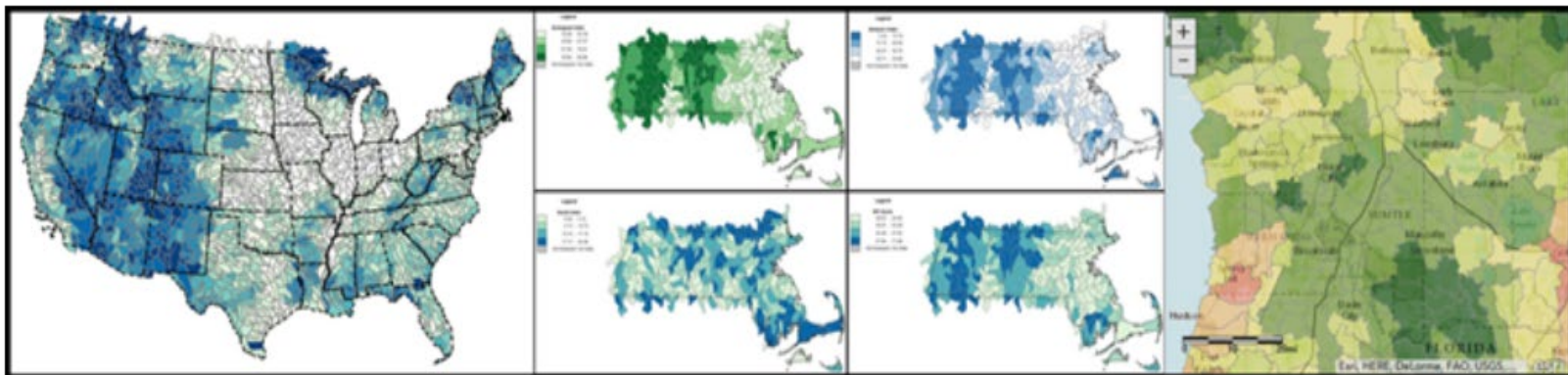


Using EPA's EnviroAtlas and Recovery Potential Screening Tools to Support Sound Decision Making



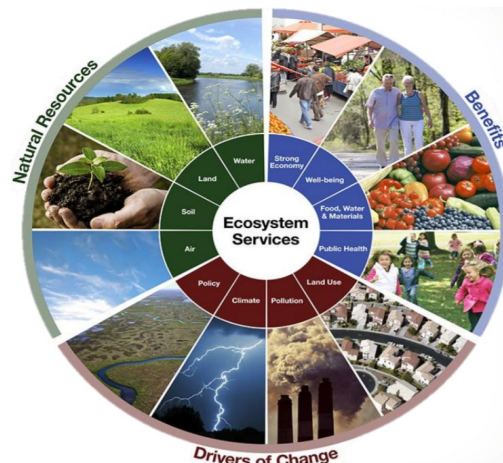
Thursday, October 21, 2021

EPA's EnviroAtlas and the Healthy Watersheds Program's Recovery Potential Screening (RPS) Tool are decision-support tools that assist users in determining where and how to take action to ensure successful ecosystem management. Well-informed planning is crucial to restoring and protecting watersheds to ensure benefits to society and the environment.

1 p.m. – 3 p.m. Eastern
12 p.m. – 2p.m. Central
11 a.m. – 1p.m. Mountain
10 a.m. – 12 p.m. Pacific
9 a.m. – 11 a.m. Alaska
8 a.m. – 10 a.m. Hawaii-Aleutian

Please join EPA's Watershed Academy for this webcast to view a live demo of EnviroAtlas and the Recovery Potential Screening (RPS) Tool and to hear how these tools can be used. This webcast will provide an overview and demonstration of these user-friendly, accessible, data-rich tools. This demonstration is meant to:

- Provide a basic demonstration on how to use these two EPA tools
- Explore environmental indicators on a diverse range of topics and showcase new tool updates
- Highlight environmental justice-relevant data and functionalities
- Offer examples to apply the data and information to inform decision making and inform strategies
- Help users learn directly from users who have found these tools helpful in their organization



Speakers

Annie Neale, EnviroAtlas Lead, U.S. Environmental Protection Agency (EPA)

Jessica Daniel, EnviroAtlas Outreach & Stakeholder Engagement Lead, U.S. Environmental Protection Agency (EPA)

Emily Cira, Recovery Potential Screening (RPS) Lead, U.S. Environmental Protection Agency (EPA)

Andrew Somor, Recovery Potential Screening (RPS) Expert, The Cadmus Group LLC

Brett Wiley, Environmental Specialist, New Jersey Department of Environmental Protection

Registration

Register in advance at EPA's Watershed Academy:

<https://attendee.gotowebinar.com/register/4229456612066996751>

For questions, contact watershedacademysupport@cadmusgroup.com

EPA's Watershed Academy provides self-paced training modules and webcasts from national experts about a range of watershed management topics.

www.epa.gov/watershedacademy

