



## **EPA COMPETITIVE GRANTS**

**Toshia King, Chris Carusiello, Zoie Chang, and Carl Sivels**

**May 18, 2021**

# OVERVIEW



- *EJ and Grants Overview*
- *Anaerobic Digestion Grants*
- *Introduction to EJSCREEN*
- *Questions and Answers*



# Environmental Justice for Tribes and Indigenous Peoples

- Provide for environmental and public health protection in Indian country and in areas of interest to tribes and other indigenous peoples
- Promote Environmental Justice Principles
- Affirms EPA's commitment to provide to federally recognized tribes and indigenous peoples in all areas of the United States and its territories and possessions, the District of Columbia, the Commonwealth of Puerto Rico, and the Commonwealth of the Mariana Islands, and others living in Indian country, fair treatment and meaningful involvement in EPA decisions that may affect their health or environment.



## Target Resources Consistent with the Priority that Environmental and Climate Justice Represents

- [Executive Order 14008](#) on Tackling the Climate Crisis at Home and Abroad
- Every year, EPA awards more than \$4 billion in funding for grants and other assistance agreements. From small non-profit organizations to large state governments, EPA works to help low-income, communities of color, and Tribal stakeholders' preference in competitive grant programs achieve their environmental goals.
- With countless success stories over the years, EPA grants remain a major tool to protect human health and the environment.



# Justice40 Initiative Values and Benefits

## Healthy Communities and Pollution Reduction

- Mandatory emissions reductions
- **EJ screening tool**
- Strengthened environmental regulations and enforcement
- Safe drinking water and wastewater infrastructure
- Brownfield and Superfund cleanups
- Life cycle analysis and toxics reductions
- Health care access

## Just Transition

- Community wealth and ownership
- Living wage, healthy jobs, union memberships
- **Healthy, regenerative economy**
- Access to work for those directly affected
- Job training pipelines (Climate Corps)
- Land bank initiatives
- Development without displacement



# Justice40 Initiative Values and Benefits

## Climate Justice and Resilience

- Flooding reduction
- Heat mitigation
- Green community infrastructure
- Community farming
- Renewable energy (no false solutions)
- Energy efficiency programs • Weatherization
- Climate-resilient affordable housing
- Zero-emissions public transit

## We Speak for Ourselves

- Community support and oversight for local investment priorities
- Shared decision-making processes
- Accountability and transparency
- Interagency coordination
- EJ metrics
- Inclusion of rural communities



# EPA Grant Programs

- Environmental Justice: provides financial assistance to support community-based organizations to collaborate and partner with other stakeholders (e.g., industry, government, academia, etc.) to develop and implement solutions that will significantly address environmental and/or public health issue(s) at the local level.
- Office of Land and Emergency Management (OLEM) Grants and Funding: includes competitive grant funding announcements for projects and programs relating to Brownfields, Federal Facilities Restoration and Reuse, Solid Waste management, resource conservation and recovery, Underground Storage Tanks and other related topics.
- Multipurpose Grants to States and Tribes: This grant program provides funding to states, tribes, and territories for high priority activities that complement programs under established environmental statutes.





## ENVIRONMENTAL JUSTICE CONSIDERATIONS FOR EPA COMPETITIVE GRANTS

- **EJ Small Grants** supports and empowers communities working on solutions to local environmental and public health issues.
- **EJ Collaborative Problem-Solving Grants** provide financial assistance to eligible organizations working on or planning to work on projects to address local environmental and/or public health issues in their communities.
  - Deadline date extended to **June 1, 2021** for **both**
  - 100 small grants will now be awarded
  - Each small grant will now be for \$75,000 each
  - 46 EJPCS awards will now be awarded
  - Each EJPCS award will now be for up to \$200,000
  - Our original EJ funding (~\$2.8 m for small grants) and ~\$3.2 for ejcps) will be used for selected projects related to the non-ARP statutes
  - Our timeline remains the same: Threshold done in June. Scoring done in July and August. Selections made in September. Awards made in October.





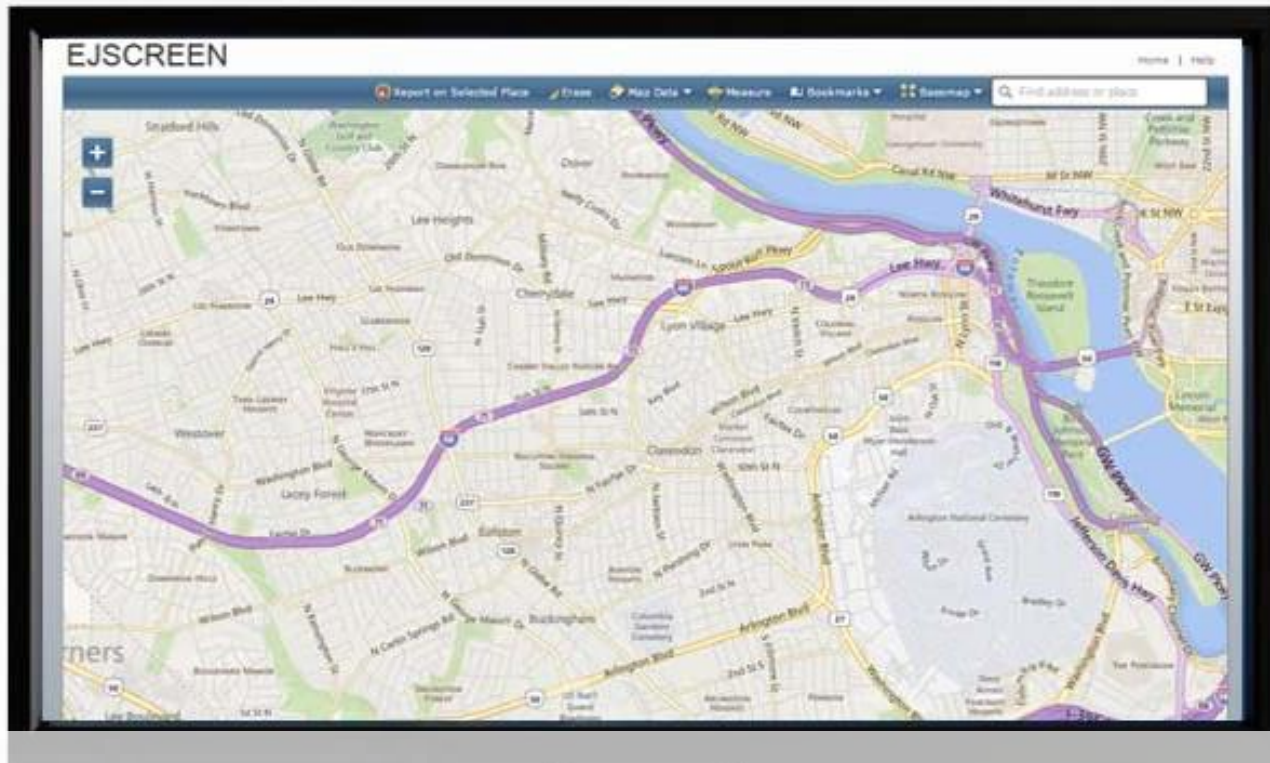
## ENVIRONMENTAL JUSTICE Grant Evaluation Criteria

- “Applications will be evaluated based on the extent to which they **demonstrate how the project will effectively address the disproportionate and adverse human health, environmental, climate-related and other cumulative impacts**, as well as the accompanying economic challenges of such impacts, resulting from industrial, governmental, commercial and/or other actions that have affected and/or currently affect people/communities of color, low income, tribal, and indigenous populations, and if applicable other vulnerable populations such as the elderly, children, and those with pre-existing medical conditions. As part of this evaluation, **applications will be evaluated**, as appropriate, **on: how the project benefits these communities and/or populations; the extent to which the project addresses engagement with these communities and/or populations, especially local residents, to ensure their meaningful participation** with respect to the design, project planning, and performance of the project; and how the project will benefit such communities and/or populations that have experienced a lack of resources or other impediments to addressing the impacts identified above. “



# *Anaerobic Digestion Request for Applications*

- **Sustainable Materials Management Anaerobic Digestion Funding Opportunity**
  - EPA supports the diversion of food waste and other organic materials from landfills.
  - After a successful grant program in 2020, EPA [selected 12 recipients](#) for the anaerobic digestion request for applications [competition](#).
  - We are intending to announce an FY21 Anaerobic Digestion Funding Opportunity this summer.
  - The goal of this funding opportunity is to accelerate the development of new or enhance/increase existing anaerobic digestion capacity and infrastructure in the United States.
  - We will send the link to the competition when it is announced.



# EJSCREEN EPA's Environmental Justice Screening Tool



**Introduction to EJSCREEN**

**EJSCREEN Data**

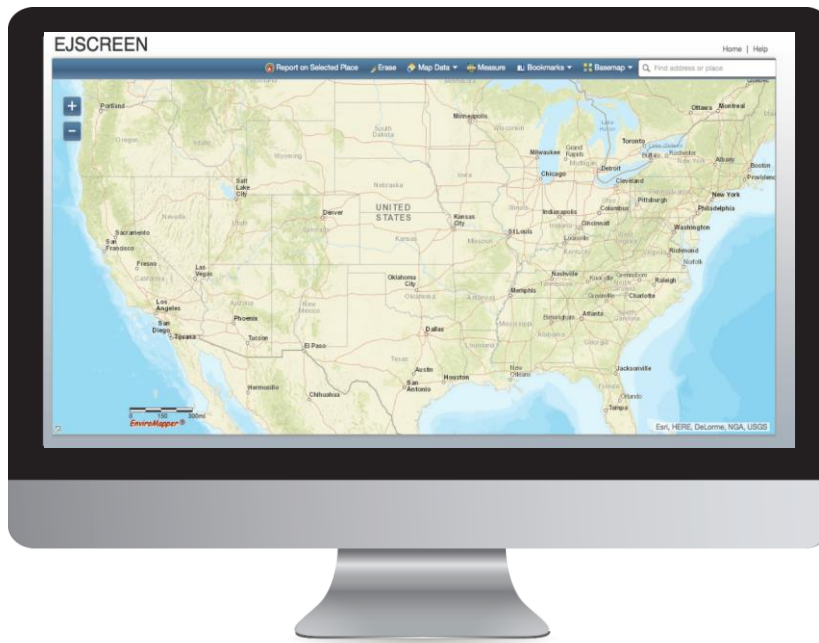
**Maps and Reports**

**EJSCREEN Uses**

**Demonstration of the Tool**

# EJSCREEN

## Key Features



### EJ Indexes

Combine demographic and environmental data to highlight vulnerable populations



### Annually Updated Data

From most recent U.S. Census Bureau American Community Survey



### Accessible and Intuitive

Web-based, easy to learn, and open sourced



### High Resolution Data

Census block group level units of analysis

## Caveats & Limitations

- **EJSCREEN is a screening tool**
  - Environmental indicators are mostly screening-level proxies for actual exposure or risk
- **EJSCREEN does not cover all environmental or EJ issues**
- **Census data has limitations and can obscure small communities**
- **Results should be verified on the ground when possible**
- **EJSCREEN does not identify EJ communities**

## EJSCREEN Other Considerations

- **Quality of life concerns**
  - Ex. Common health concerns
- **Unique cultural and social concerns**
  - Ex. Community background and history
- **Customary uses of land**
  - Ex. Sacred land, historic sites, agricultural uses
- **Control over land use decision-making**
  - Ex. Relationship with RCRA facilities



# UNITS OF ANALYSIS



**United States**



**State**

primary governmental divisions of the United States.



**County**

Largest divisions within states.



**Census Tract**

Collection of Census block groups, mostly between 1,200 and 8,000 people.



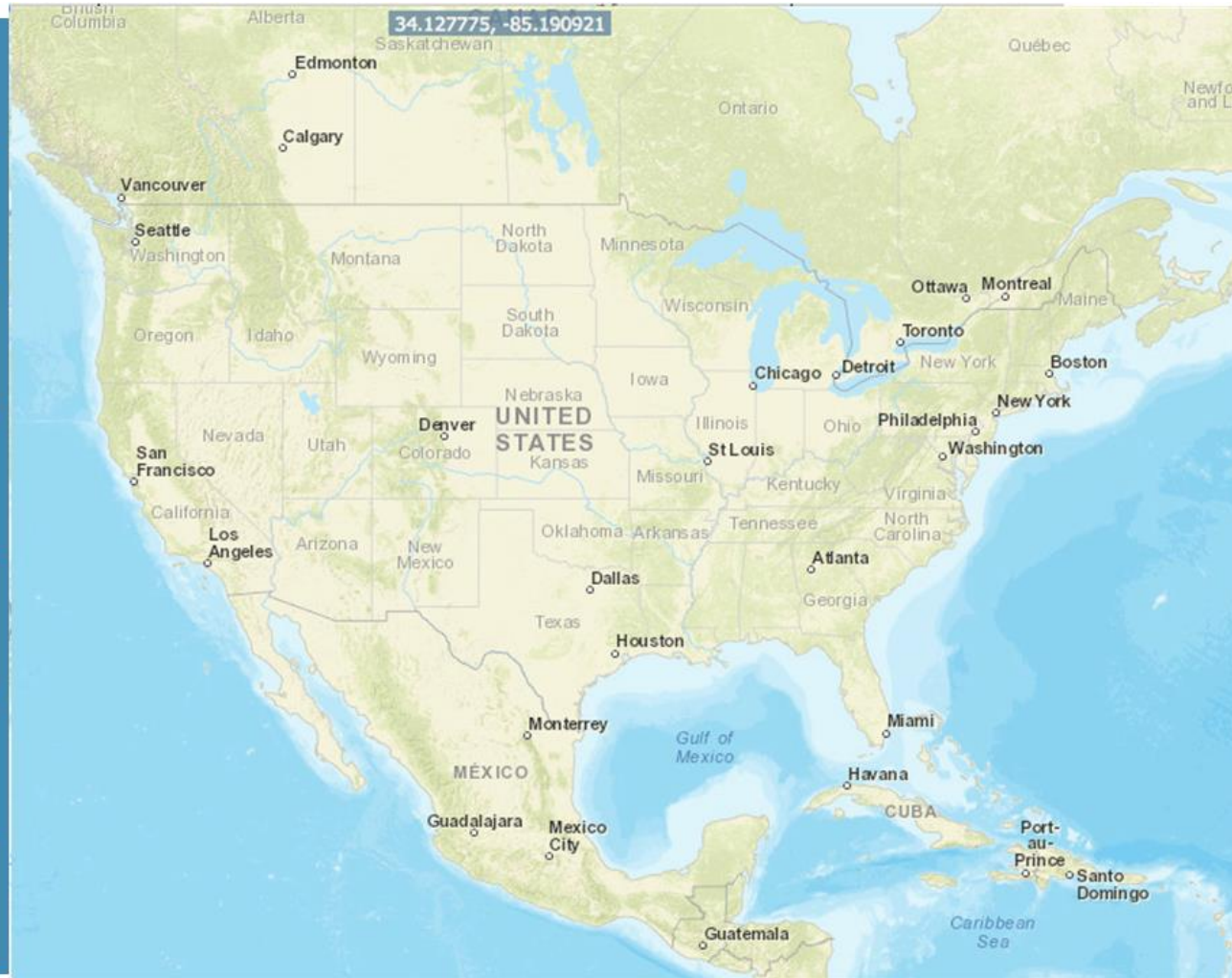
**Block Group**

Collection of residential blocks, mostly between 600 and 3,000 people.



**Block**

Residential block, bounded on all sides by streets.



## **Communities can use EJSCREEN to:**

- **Supplement their grant applications**
- **Conduct environmental analysis**
  - Compare environmental burdens
  - Research cumulative effects
  - Aid in prioritization efforts
- **Create data visualizations for education and awareness-building**

## Questions and EJSCREEN Walkthrough

Office of Resource Conservation and Recovery (ORCR)

[King.toshia@epa.gov](mailto:King.toshia@epa.gov)

[Carusiello.chris@epa.gov](mailto:Carusiello.chris@epa.gov)

[Sivels.carl@epa.gov](mailto:Sivels.carl@epa.gov)

[Chang.zoie@epa.gov](mailto:Chang.zoie@epa.gov)